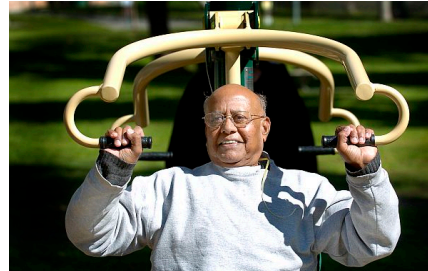


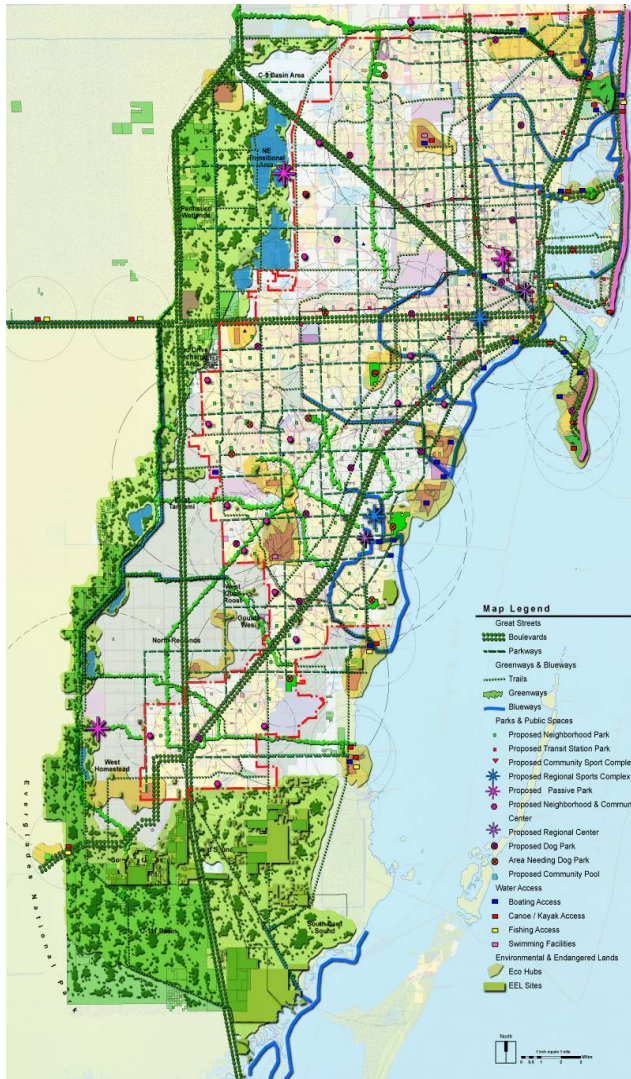
Age Friendly Initiative Outdoor Spaces and Parks

Miami-Dade County

Parks, Recreation and Open Spaces



Open Space Master Plan



A 50 Year, Unifying Vision for a Livable, Sustainable Miami-Dade County “through the Parks Window”:

Public Realm:

1. Great Parks
2. Great Public Spaces
3. Great Natural and Cultural Areas
4. Great Greenways and Blueways
5. Great Streets

Age Friendly Initiative

Outdoor Spaces and Parks

Policy Changes

Program Opportunities

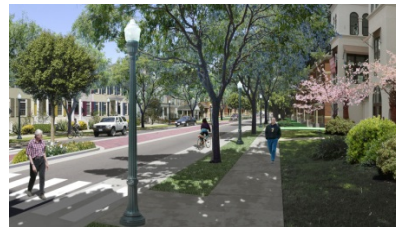
Infrastructure Improvements

What We Have Done

Age Friendly Initiative

Policy

- Developed age friendly criteria
- Evaluated access to our parks
- Identified barriers and improvement opportunities
- Established an implementation plan
- Amended policy (CDMP)
- Adopted language into our guiding documents



Age Friendly Initiative

Programming

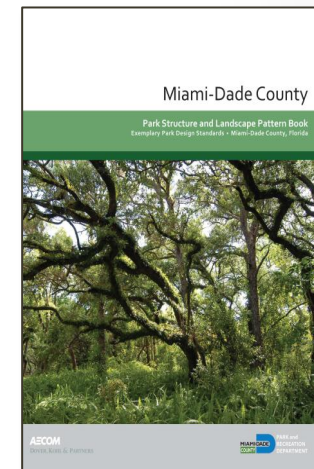
- ❑ Added older adult programs (EnhancedFitness, Yoga)
- ❑ Incentivize participation in Walking Clubs
- ❑ Developed Outdoor Exercise Areas (program cards)
- ❑ Host monthly health and wellness fairs at community parks
- ❑ Promote programs through marketing efforts



Age Friendly Initiative

Improvements

- ❑ Developed age friendly criteria
(lighted pathways; shaded seating and programs)
- ❑ Added criteria as policy into guiding documents
- ❑ Evaluated our parks
- ❑ Identified improvement opportunities
- ❑ Determined costs
- ❑ Added to unfunded needs list
- ❑ As funding becomes available – policy will guide priorities



CITY OF FERRYSBURG - 2005 RECREATION PLAN			
COST ESTIMATE FOR COAST GUARD PARK IMPROVEMENTS			
ENTRANCE AREA			
ITEM	UNIT	NO. OF UNITS	EXTENDED PRICE
Site Prep And Grading	L.S.	1	\$10,000.00
Entrance Drive Paving	S.Y.	2240	\$13,000
Curb and Other	L.F.	345	\$12,000
Trail	L.F.	2500	\$15,000
Group Display Area Paving	S.F.	5600	\$5,600
Planter Curb	L.F.	240	\$22,000
Ballard and Chain	L.F.	640	\$12,000
Group Display	L.S.	1	\$30,000.00
Entrance Sign	L.S.	1	\$7,500.00
Palmetto Fence	L.F.	5925	\$12,000
Dune Grass	S.F.	35000	\$0.40
Stairs and Deck at Shedding Hill	L.S.	1	\$20,000.00
Stairs and Deck South of Soccer	L.S.	1	\$20,000.00
Stairs and Overlook Deck	L.S.	1	\$50,000.00
Site Signage	L.S.	1	\$5,500.00
Site Lighting	EA.	3	\$2,000.00
Benches along Trail	EA.	5	\$800.00
Storm Drainage	L.S.	1	\$0,000.00
Subtotal:			\$441,952.00
Contingencies and Professional Fees (20%)			\$88,390.40
TOTAL:			\$530,342.40

Note: All costs are in 2005 dollars

So What Can You Do?

Look at Policy Changes

Identify and Prioritize Improvements

Develop and Promote Older Adult Programs

Age Friendly Initiative

Miami-Dade County

Parks, Recreation and Open Spaces

