



Steering Committee Meeting

Tuesday, July 21, 2015
2:00 PM – 4:00 PM

Health Foundation of South Florida
2 South Biscayne Blvd., Suite 1710
Miami, FL 33131
Dial In Option: 305-330-4986, Pin: 28369



WELCOME

AGENDA

2:00 PM - 4:00 PM

Welcome & Introductions

Martha Pelaez &
Peter Wood

2:00
PM

Leadership Development

Steering Committee
Memorandum of
Understanding

2:10
PM

Action Plan

Development
Launch

2:20
PM

Awareness Campaign & Summit

Summit
Awareness Campaign
Learning Circles
Discussion Groups

2:35
PM

Project Vitality

Policy
Age-Friendly Business District
Transportation Planning Guide
Parks Toolkit

2:55
PM

Evaluation

Summit Evaluation
Final Evaluation Plan

3:20
PM

Going Forward: What's Next?

Continued Leadership
Financial & In-Kind Support
Priority Areas & Potential
Projects

3:30
PM

Partner Feedback

Steering Committee

3:50
PM

Closing

Martha Pelaez &
Peter Wood

4:00
PM

INITIATIVE MISSION

“Create a community for all ages, where older adults in Miami-Dade can stay active and healthy with dignity and enjoyment.”



MIAMI-DADE AGE-FRIENDLY INITIATIVE BACKGROUND & HISTORY



GIA Community AGEnda Grant Recipients

Community AGEnda is funded by Grantmakers in Aging through a generous grant from the Pfizer foundation.
Ultimate goal is to create communities for all ages.



1. City of Atlanta, Georgia
2. Maricopa County, Arizona
3. Greater Kansas City Region
4. City of Bloomington, Indiana
5. Miami-Dade County, Florida



LOOKING
BACK:
UPDATES

Year 3 Projects



Leadership Development



Leadership Development

- **COLLECTIVE IMPACT FRAME WORK RESULTS BASED ACCOUNTABILITY**
- **STEERING COMMITTEE LEADERSHIP**
- **LEAD AGENCY LEADERSHIP & SIGN MOU'S**



LEAD AGENCIES & MOU

Alliance for Aging
Answers on Aging

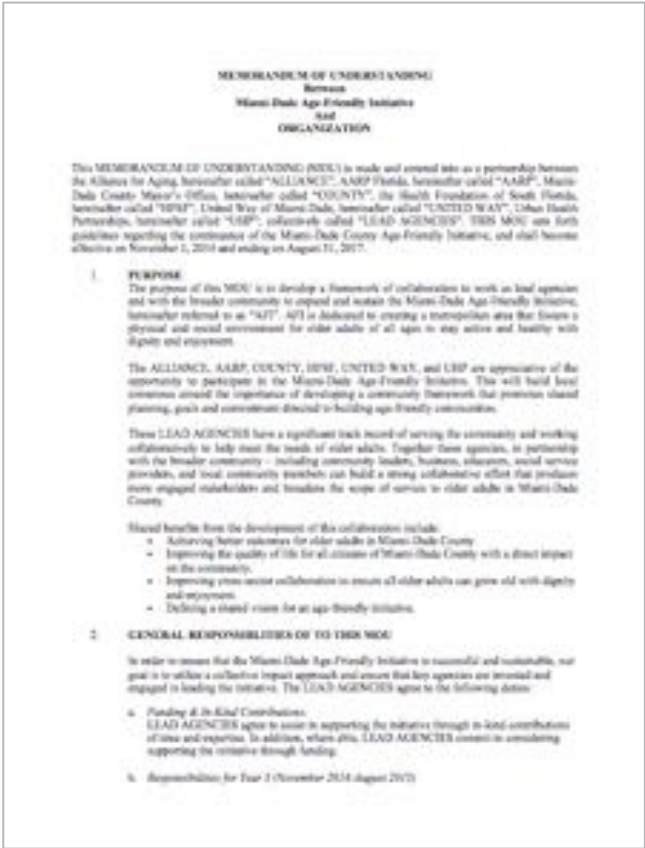
AARP
Real Possibilities

HEALTH FOUNDATION
of south florida

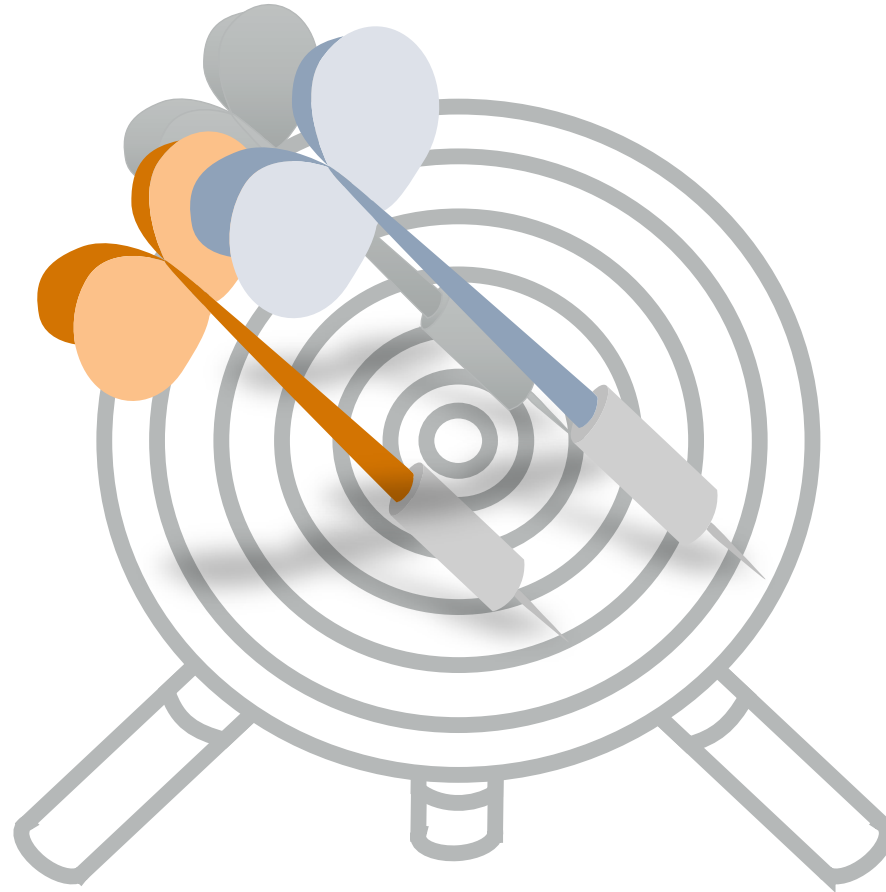
MIAMI-DADE COUNTY

UHP
Urban Health Partnerships

United Way
United Way of Miami-Dade



Priorities & Action Plan

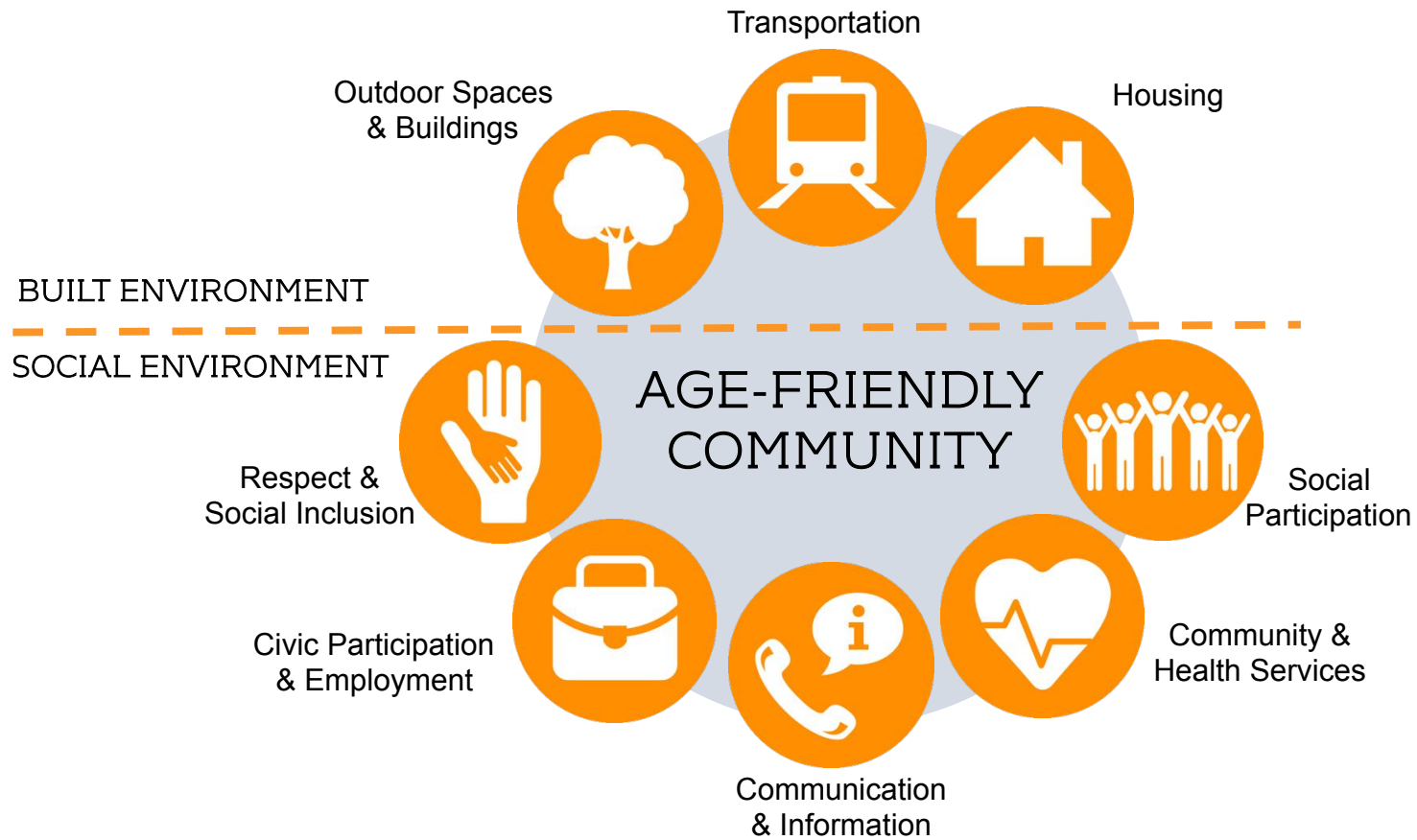


Priorities & Action Plan

- **RESULTS-BASED ACCOUNTABILITY FRAMEWORK**
- **IDENTIFY PRIORITIES FOR INITIATIVE**
- **DEVELOP 3-YEAR ACTION PLAN**

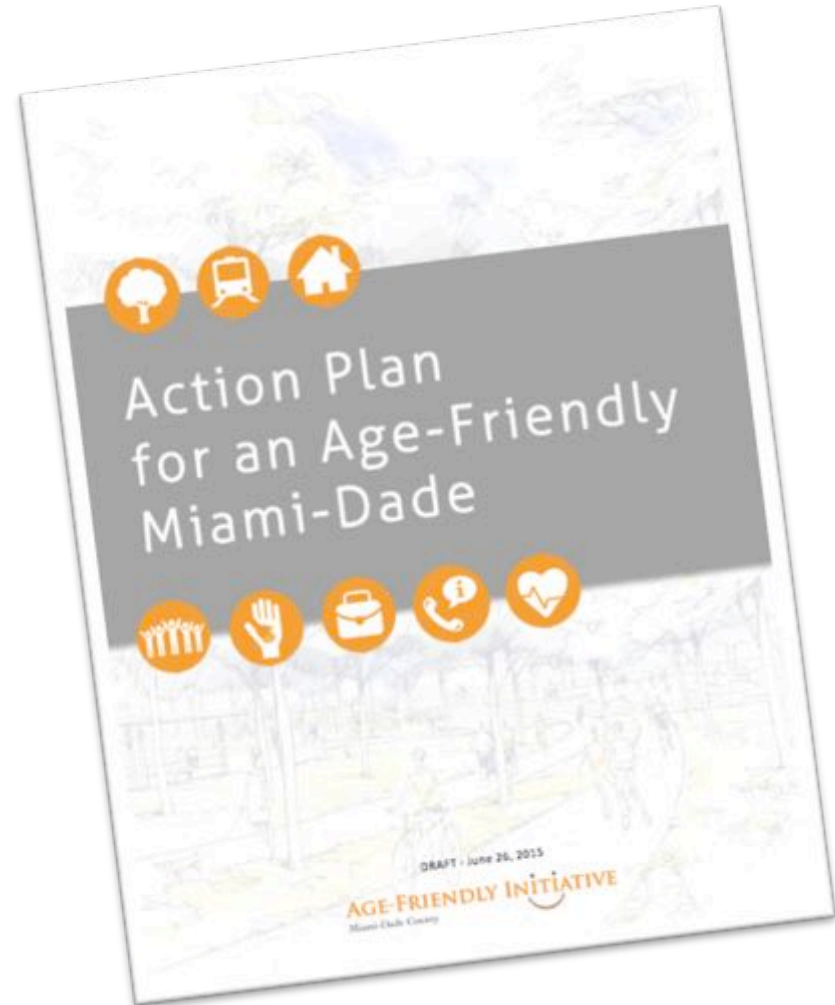


AGE-FRIENDLY DOMAINS



Adapted from: Suzanne Garon, University of Sherbrooke

ACTION PLAN FOR AN AGE- FRIENDLY MIAMI-DADE





OUTDOOR SPACES & BUILDINGS

STRATEGIES

1

PARKS & PROGRAMMING

Establish Safe Parks and Programs that meet Age-Friendly Park standards through proximity, standards, and promotion.

2

AGE-FRIENDLY BUSINESSES

Increase the number of age-friendly businesses in Miami-Dade County.

3

PLACEMAKING

Improve the sense of place, comfort, and interconnectedness of communities by promoting age-friendly amenities and events, as well as connectivity between public spaces and neighborhoods.





TRANSPORTATION

STRATEGIES

1 ACTIVE TRANSPORTATION & SAFE STREETS

Advocate for and Implement Complete Streets for safer, usable streets for all modes, users and mobility

2 ON-DEMAND TRANSPORTATION

Ensure older adults have knowledge of and access to on-demand transportation services.

3 BETTER ACCESS & QUALITY OF TRANSIT STOPS

Ensure that older adults have knowledge of resources for transit and how to use it, as well as have better access to quality transit stops

[Action Plan for an Age-Friendly Miami Dade]

 **Domain 2: Transportation**

Vision:
Older adults utilize a variety of types of transportation they want and need to move throughout the community.

Why is this important?
Because the ability to easily access desired destinations is so vital to independent living, transportation is a cross-cutting issue and is one of the most important components of active aging.¹ Even if there are public spaces, engagement opportunities, and services available for older adults, it is important for them to be able to access them. Urbanization has led communities to become sprawled, creating barriers that are not conducive for drivers and pedestrians to share the roads. Since many neighborhoods were designed with drivers in mind, there is a lack of pedestrian infrastructure such as traffic calming features like narrowed roads and speed humps, adequate sidewalks, and crosswalks creating barriers for pedestrians. For example, the current time at most crosswalks allows for 3.5 feet per second. The time required is too short even for healthy older adults to cross the street.² This is a concerning problem since it poses risks to all pedestrians, especially older adults who are at increased risk of getting hit by a car and older adults age 75 and older who are more likely to be in fatal accidents. Data suggests that this can become an increasing issue as this age group continues to increase.³

Many older adults live long past their driving years and may eventually be forced to give up driving due to disability or impairment or due to the costs associated with driving. Loss of driving can result in a sense of loss in independence, social isolation and an overall decline in quality of life if there are no good alternative options. That is why the availability of affordable alternative transportation options is so important for older adults to maintain their independence.



The United States is not prepared to meet the challenges affecting mobility in older adults, especially with continued urbanization and automobile dependency.⁴ The availability of several modes of accessible and affordable transportation is a key factor in promoting active aging, since the ability to move around the neighborhood influences all other aspects of livability. Gaps in public transportation should be addressed to cover infrastructure, equipment and service for all modes of transportation in order to create an age-friendly community. Cost and reliability, are also factors that influences use of public transportation and need to be addressed.⁵

One way to accommodate for this is by implementing Complete Streets principles, which provide appropriate infrastructure for all modes and all ages and abilities.

What's Going on in Miami-Dade?

According to the 2008-2012 records for pedestrian fatalities in Miami-Dade County, there has been a modest increase in the number of older adults' fatalities among some age groups 50 and over, where the greatest increase is seen among older

Page 20 of 24



HOUSING

STRATEGIES

1

AFFORDABILITY

Provide affordable housing options and availability to older adults through education, policy, and an increase in affordable options

2

ACCESSIBILITY & ADAPTABILITY

Ensure that older adults are able to live in homes that are accessible or able to be modified and adaptable to their needs.

3

PROGRAMS & SERVICES

Ensure that services and programs meet the housing needs of older adults

[Action Plan for an Age-Friendly Miami Dade]

 **Domain 3: Housing**

Vision:
Housing for older adults is affordable, accessible, and adapted to their needs and interests

Why is this important?
For older adults aging in the community, living conditions can promote health, enhance coping, and reduce disablement. However, they can also create stress and increase risks of illness and accidents. Although socioeconomic disparities in housing likely contribute to inequalities in interior conditions, quality of living in housing is also shaped by social resources such as co-residential relationships, social network ties, and social support. A set of risky or stressful physical and ambient living conditions including structural disrepair, clutter, lack of cleanliness, noise, and odor can lead to significant decline in the quality of life of older adults¹⁰. Older adults who have a co-resident partner and more sources of support are exposed to fewer risky or harmful living conditions. This suggests that living conditions are an important, though overlooked, factor that can have a significant effect on quality of life¹¹. In addition, results from a study with homeless older adults showed that older adults who acquired housing experienced improvements in depression¹². Appropriate housing is directly linked to mobility that allows older adults to engage in social participation and inclusion, and access and use of community and social services. Availability of housing that is affordable, well maintained, and adapted to the needs of older adults is vital to safety, well-being, and independence¹³.

What's Going on in Miami-Dade?
According to the 2013 American Community Survey estimates, of the approximately 826,031 households in Miami-Dade, 188,928 households



are individuals ages 65 or older (more than 20%). 69% of older adult households are 69.0% owner-occupied while 31.0% are renter-occupied.¹⁴

Affordability
The high cost of living and rental shortage in Miami-Dade can be a barrier for older adults, making it difficult for older adults to afford adequate housing. According to the Florida Housing Data Clearinghouse data for 2015, nearly 51% of those ages 65 spent at least 30% of their income on rent or mortgage. Where 21% were cost burdened spending over 30% of their incomes, and 30% severely cost burdened spending more than 50% of their income on housing.¹⁵

% of Households Spending more than 30% of Income on Housing, Age 65+

Year	Severely Cost Burdened (>50%)	Cost Burdened (>30%)
2007	15%	35%
2011	15%	35%
2015	15%	35%

Florida Housing Data Clearinghouse, University of Florida, Shonberg Center for Housing Studies, 2015

Awareness Campaign & Age-Friendly Summit



Awareness Campaign & Age-Friendly Summit

- **DEVELOP & IMPLEMENT AWARENESS CAMPAIGN**
- **AGE-FRIENDLY SUMMIT ON MAY 12, 2015**
- **LEARNING CIRCLES**
- **DISCUSSION GROUPS & STORIES**



AGE-FRIENDLY SUMMIT

• **TUESDAY, MAY 12, 2015**
8:30 AM - 2:00 PM
Newman Alumni Center, Coral Gables

• **150 attendees including elected officials, department heads, leaders, & older adults representing more than 50% of municipalities**

• **Materials are available at AgeFriendlyMiami.org/Age-Friendly-Summit**



Join Us For
The Age-Friendly Summit
Shaping Our Community For All Ages

An interactive series of discussions and presentations with local government officials and community leaders aimed at making Greater Miami a better place for our citizens of all ages, especially older adults.

Miami-Dade County's population is getting older, and we're not prepared. So we need to act now and act locally to make our community age-friendly. *Let's work toward change - together.*

— Tuesday —
5-12-15
8:30 a.m. to 2:00 p.m.

Newman Alumni Center • University of Miami
6200 San Artero Drive • Coral Gables, FL 33146
Program planned by AARP Florida, Alliance for Aging,
Health Foundation of South Florida, Miami-Dade County,
Urban Health Partnerships, and United Way of Miami-Dade

RSVP at AgeFriendlyMiami.org
or 786-224-2309

Continental breakfast and lunch will be provided.

AGE FRIENDLY INITIATIVE
Miami-Dade County



AGE-FRIENDLY SUMMIT



w.Ag

AWARNNESS CAMPAIGN OVERVIEW

1. PUBLIC RELATIONS

Publicity generation activities will include the distribution of a media alert, distribution of press releases, and ad hoc pitching to generate feature coverage

3. EMAIL COMMUNICATIONS & DIRECT MAIL

Develop a database of contacts, send email and direct mail versions of summit invitations and collateral printed pieces

5. SOCIAL MEDIA & ENGAGEMENT

Development of LinkedIn and consolidated management of Facebook, Twitter on Hoot Suite as a shared responsibility



2. COLLATERAL

Development of collateral items will include 3 essential pieces such as a simple brochure, fact sheet, and updated website

4. ADVERTISING

Seek in-kind advertising from *The Miami Herald* and *El Nuevo Herald* to promote the Age-Friendly Summit. In addition, will seek in-kind outdoor advertising through relationship with Clear Channel Outdoor

6. METRICS

In order to evaluate the progress and effectiveness of our campaign, track metrics on Media Outreach, E-mail Reach, Social Media and Website analytics

FEATURE COVERAGE

MON, JULY 2015

VIDEOS | EVENTS | BLOGS | PHOTOS | SIGN IN

The Miami Times

Search Miami Times SEARCH

HOME NEWS OPINIONS FAITH & FAMILY LIFESTYLES BUSINESS E-EDITION OBITUARIES BLACK EXPERIENCE

Advertise Subscriptions Archives

The age-friendly summit attracts Miami-Dade business, civic elite

5/20/2015, 2:38 p.m.



AGE FRIENDLY INITIATIVE Miami-Dade Co. AGE FRIENDLY INITIATIVE Miami-Dade Co.

WELLS FARGO FOR A LIMITED TIME

Qualified Wells Fargo customers get special interest rate discounts on Personal Loans and Lines of Credit

The Great Rate Event [Learn More](#)

WELLS FARGO

FEATURED VIDEOS

MON, JULY 2015

VIDEOS | EVENTS | BLOGS | PHOTOS | SIGN IN

The Miami Herald

85° Sign In | Subscribe

FULL MENU NEWS SPORTS BUSINESS REAL ESTATE Search the Herald

Regisist Health South Florida HealthCare that Cares. Learn More

HANDSOWER SHARPER LESS EXPENSIVE HARRY'S

Editorials MAY 19, 2015

As baby boomers age



AND NOW, IT'S closer THAN EVER.

www.Age

Aiming to get wiser as population gets older

Miami-Dade's first Age-Friendly Summit drew more than 150 people, including elected officials and policy wonks wrestling with the challenges of a county projected to get grayer.

BY ANA YECAMA-SANCHEZ

In public neighborhood centers and more accessible to older adults, cities must make these organizations more effective to overcome, speakers said during a conference on Tuesday. And to succeed in a changing lot of age-friendly goals, groups — whether nonprofit or for-profit — must have to have the guidance for the common good.

"Consider how your own but not an age-friendly issue but as issues that are essential to the quality of life for everybody," said Dr. Scott and he says to what



PLANNING MODE: Cui Fook, of the Florida Department of Transportation, speaks during Miami-Dade's first Age-Friendly Summit at the Convention Center.

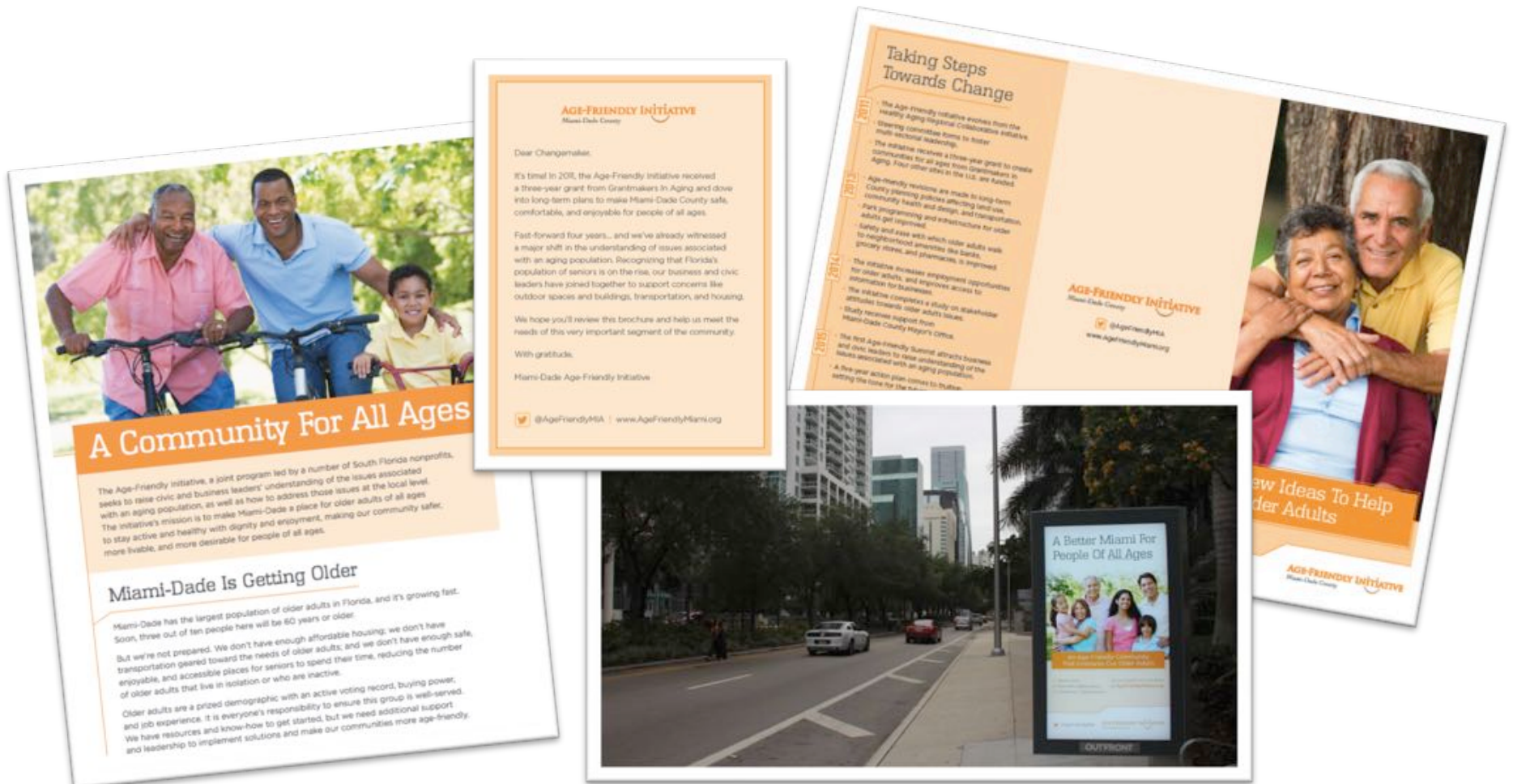
changes, but bicycle friendly, pedestrian friendly, children friendly, they can be."

But was the keynote speaker at Miami-Dade's first Age-Friendly Summit, which brought more than 150 people to the University of Miami Rosen Alumni Center. The speakers included elected officials as well as policy wonks wrestling with the challenges of a county projected to grow grayer. The summit was organized by the Age-Friendly Initiative, a collaborative program of nonprofits, funded in part by grants from the AARP and the Pfizer Foundation.

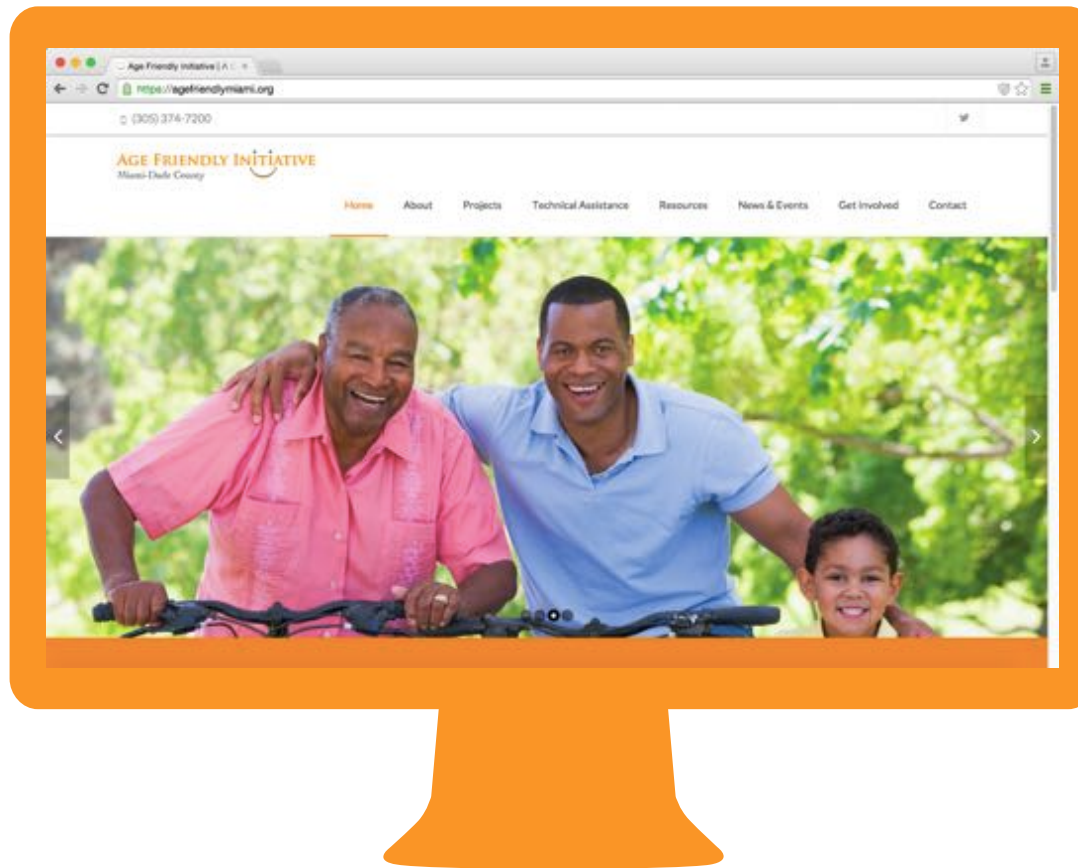
Reports estimate that the U.S. 65-and-older population will grow from 38 million in 2010 to 50 million by 2020. In Miami-Dade, which already has the largest population of older adults in Florida, some

• **WIN TO SUMMIT, 38**

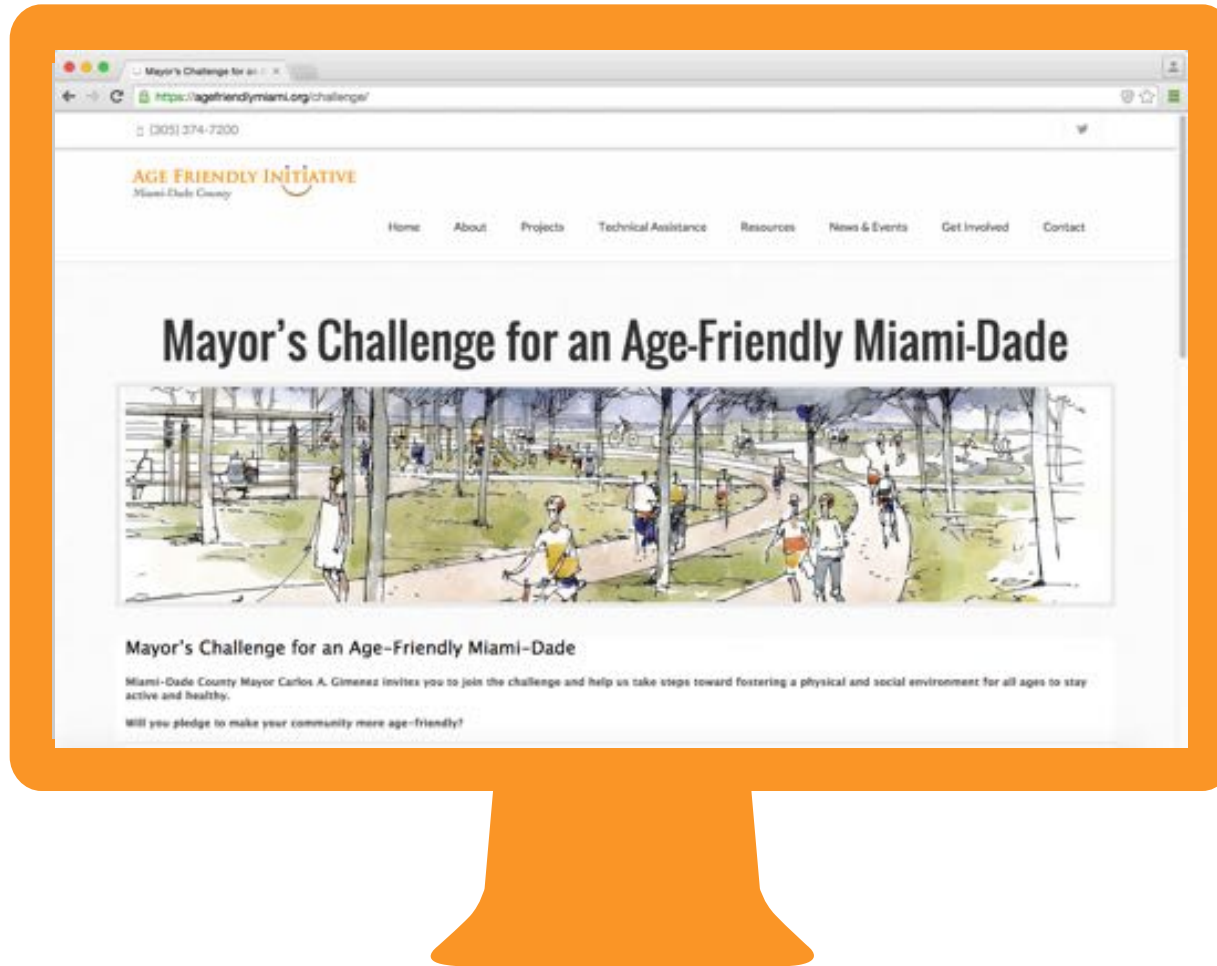
COLLATERAL & ADVERTISING



WEBSITE & SOCIAL MEDIA



MAYOR'S CHALLENGE



AWARENESS CAMPAIGN: OTHER PROJECTS



LEARNING CIRCLES



STORIES & DISCUSSION GROUPS



greater
miami
chamber
of commerce



PROJECT EXPANSION & VITALITY



PROJECT EXPANSION & VITALITY



POLICY COMPONENT



NEIGHBORHOOD COMPONENT: BUSINESS DISTRICT PROMOTION, EVALUATION, TOOLKIT



OLDER ADULTS TRANSPORTATION PLANNING GUIDE



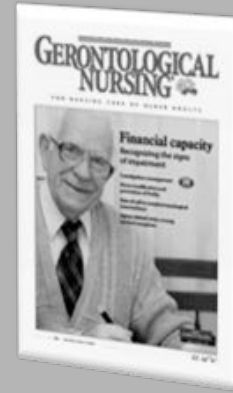
PARKS COMPONENT: DEVELOP AN AGE-FRIENDLY PARKS TOOLKIT





L RTP

The Miami-Dade MPO Governing Board adopted the 2040 Long Range Transportation Plan (L RTP) during their Oct. 23, 2014 meeting which included age-friendly considerations, language and objectives.



Crosswalks

FDOT recently completed a pedestrian safety and mobility study along SW 8th St from SW 27th Ave to Brickell Ave. The study recommended new marked crosswalks, including some with RRFB (Rectangular Rapid-Flash Beacons). Some coincide with the area we worked with in Little Havana for Safe Routes to Age in Place.



CDMP

On Nov. 19, 2014, the BCC **unanimously** approved the proposed amendments as is for transmittal to the state of Florida for review. The application being sponsored by Chairwoman Rebeca Sosa and co-sponsored by Commissioner Daniela Levine Cava.

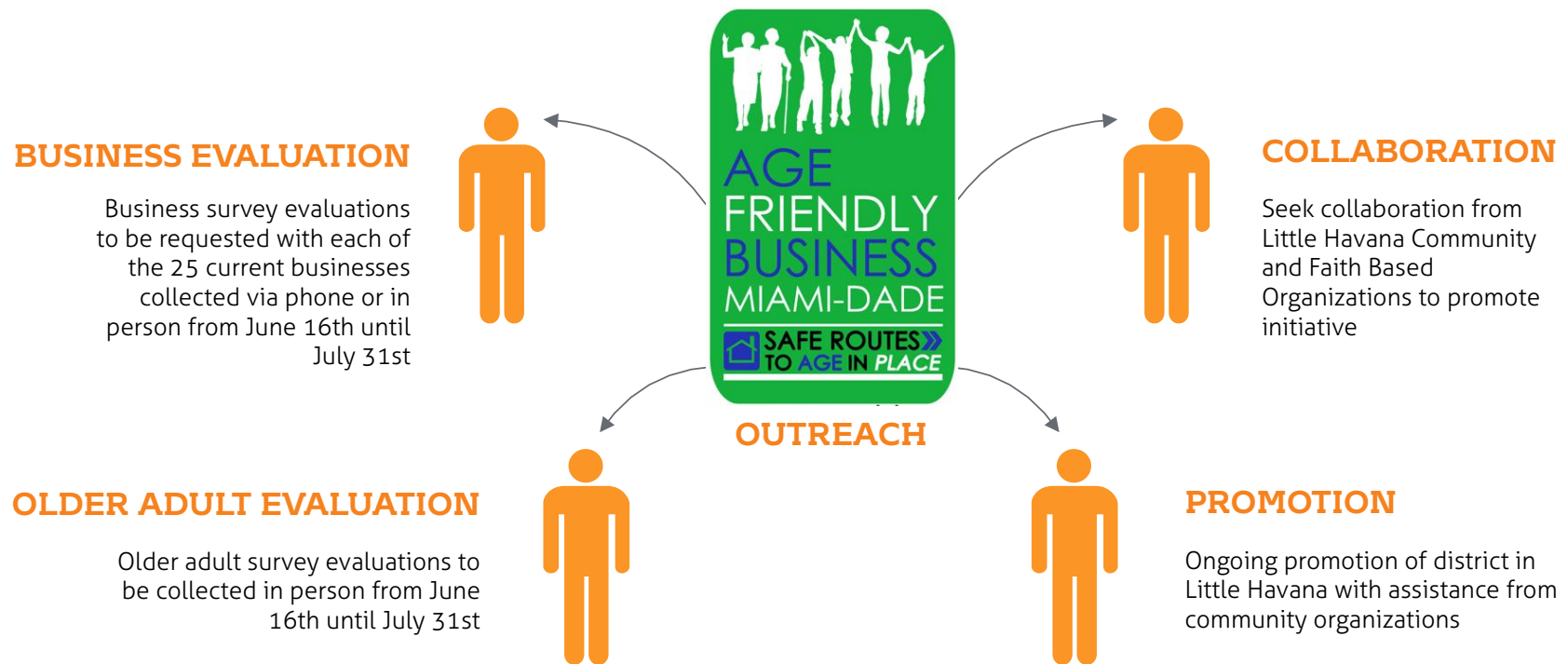


Publication

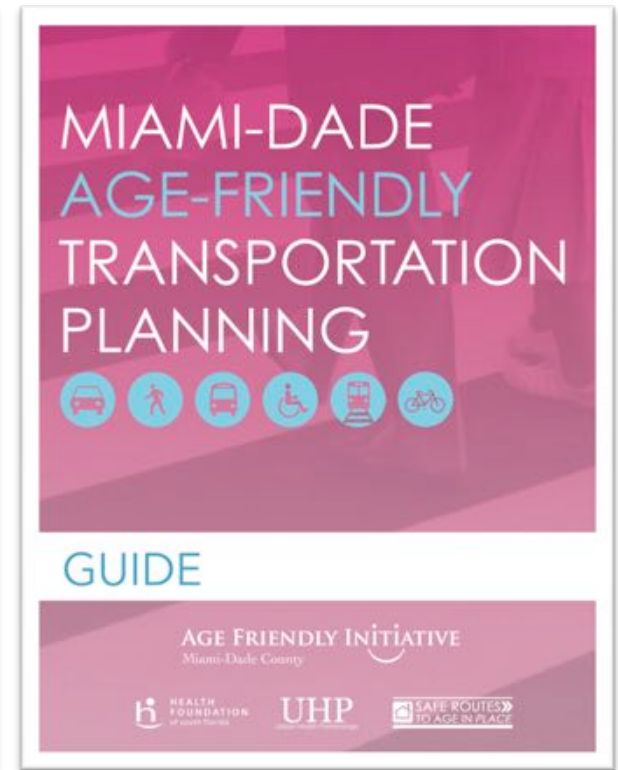
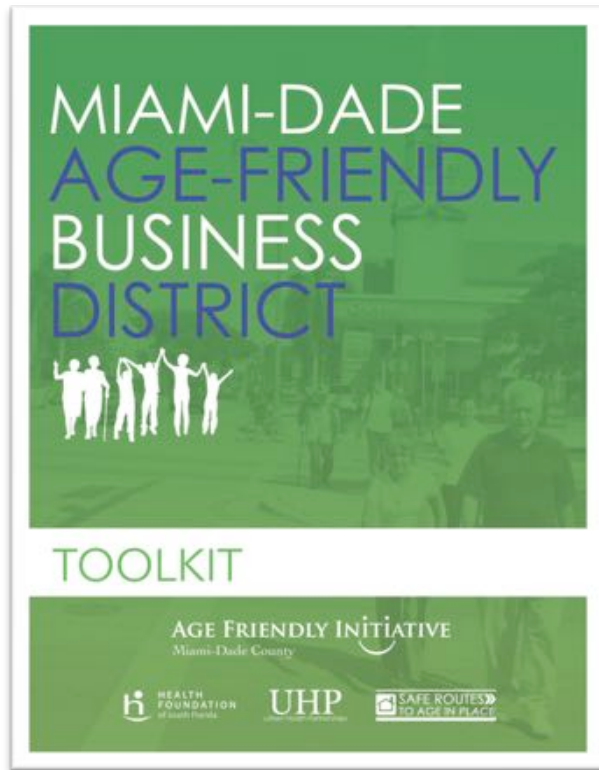
The paper "An Audit of a Diverse Community for Safe Routes to Age in Place: Environmental Policy Implication" was accepted for publication in the Journal of Gerontological Nursing for the Public Policy Section and will appear in the March 2015 issue.



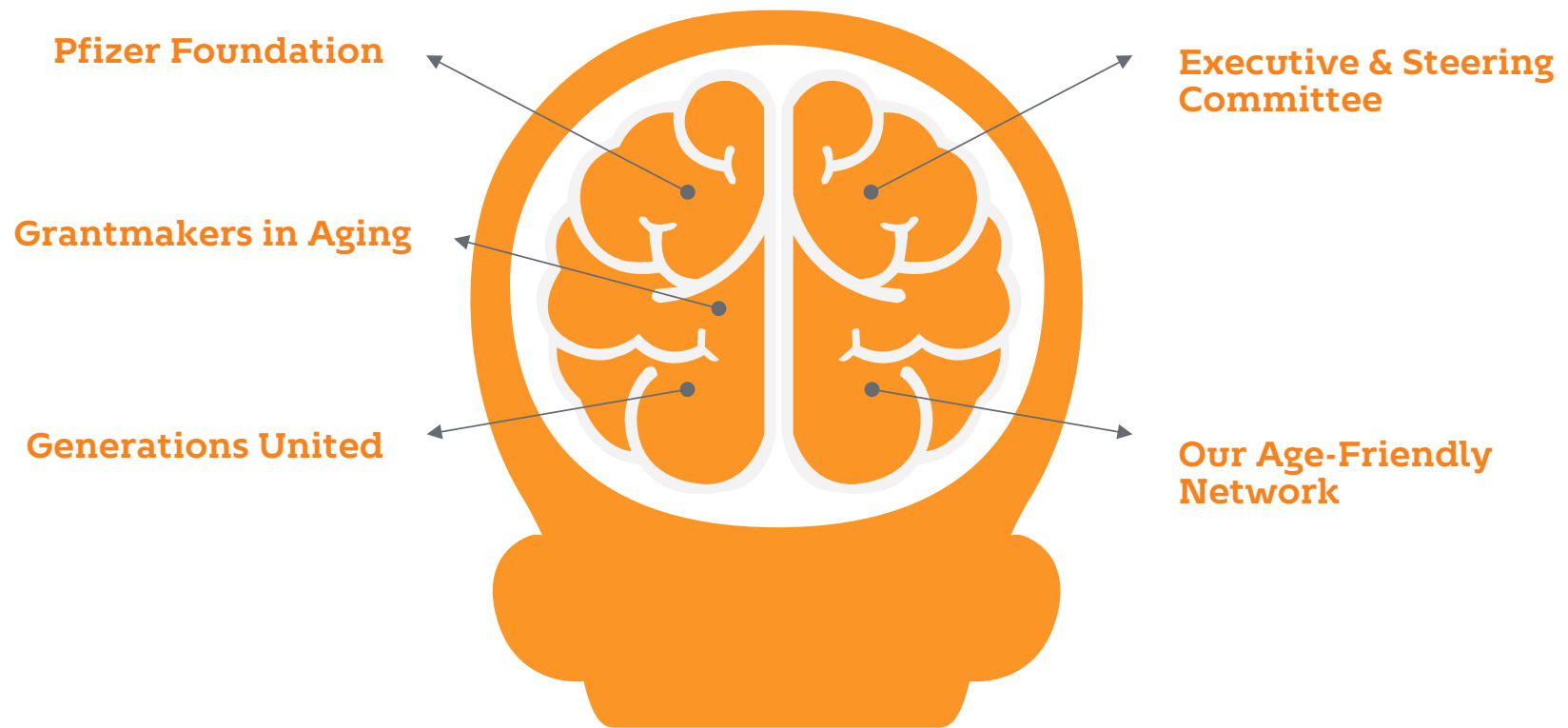
AGE-FRIENDLY BUSINESS DISTRICT



TOOLKITS & GUIDES



TECHNICAL ASSISTANCE

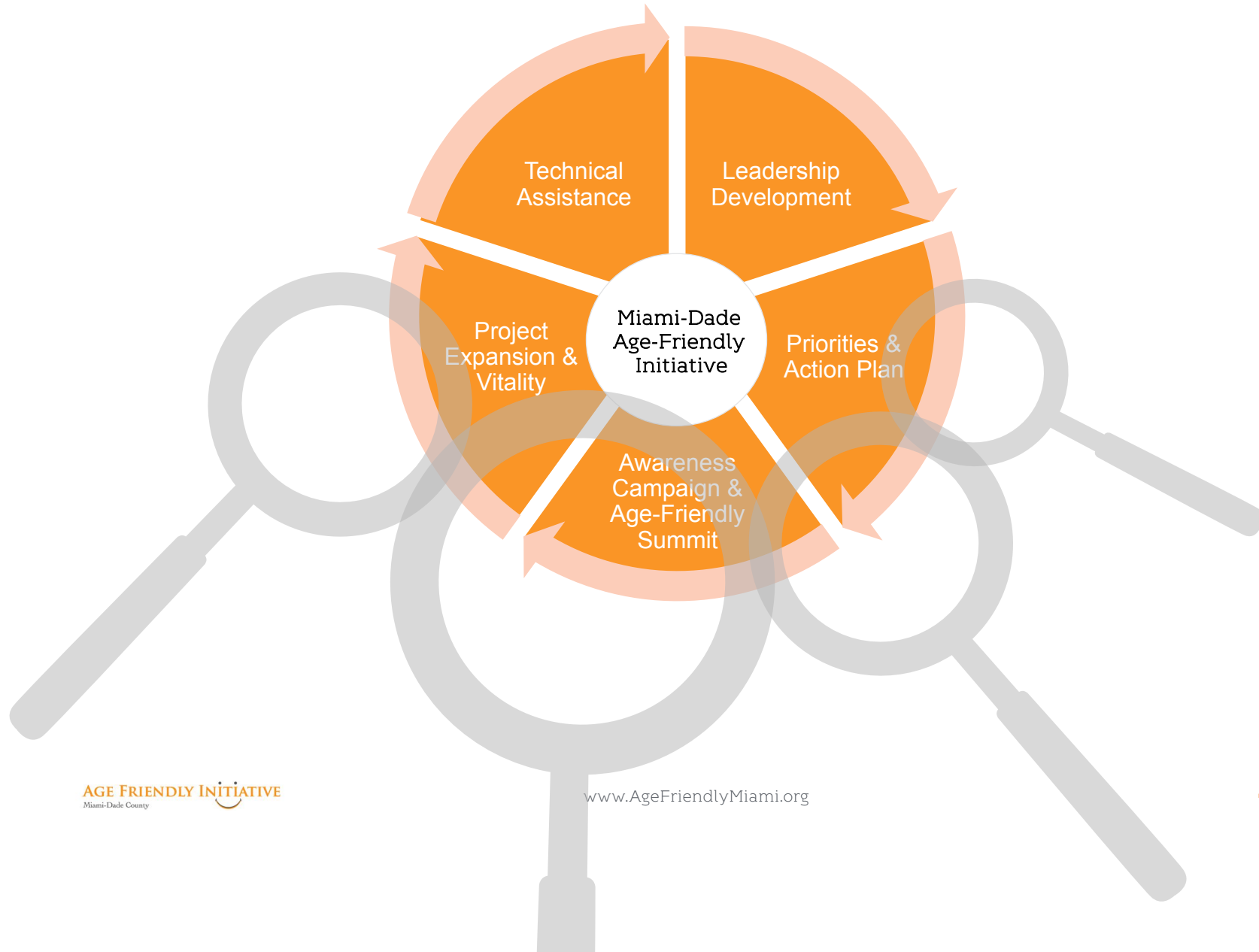


TECHNICAL ASSISTANCE

- **PROVIDE TECHNICAL ASSISTANCE TO INTERESTED ORGANIZATIONS & MUNICIPALITIES**
- **WORK WITH HEALTHY COMMUNITY PARTNERSHIPS (LITTLE HAVANA & MIAMI GARDENS)**
- **PROVIDE ASSISTANCE & COLLABORATE WITH OTHER COMMUNITY AGEnda SITES**



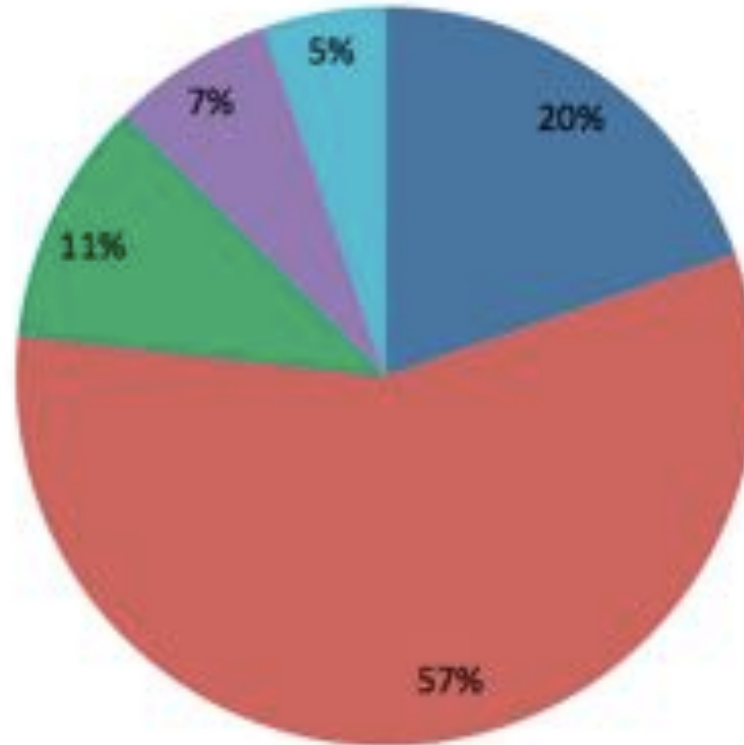
EVALUATION



SUMMIT EVALUATION

Sectors Represented at the Summit

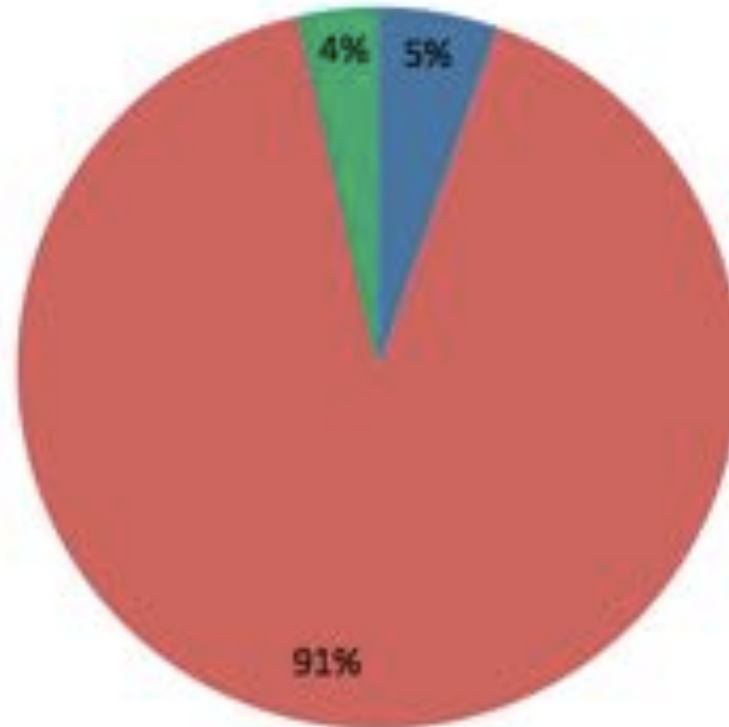
■ Non profit ■ Government ■ Private ■ Other ■ Missing



SUMMIT EVALUATION

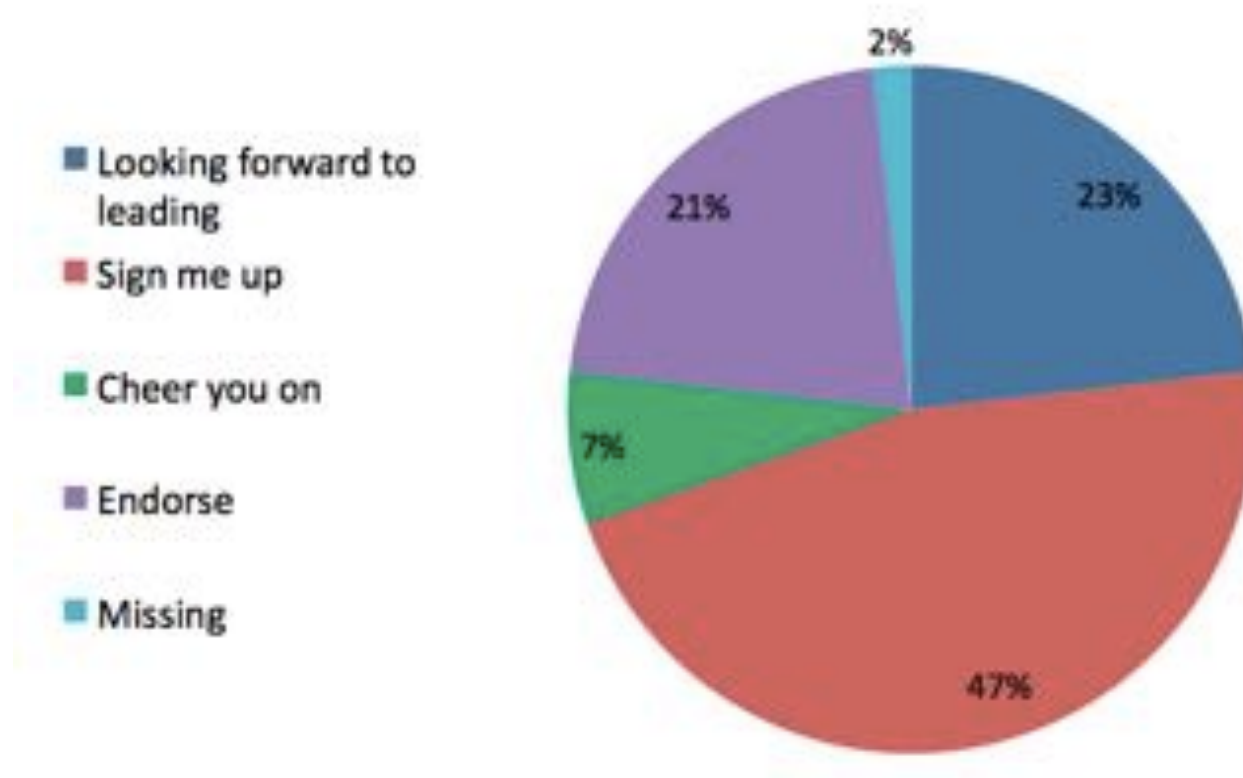
Government affiliation

■ Elected official ■ Non-elected ■ Missing



SUMMIT EVALUATION

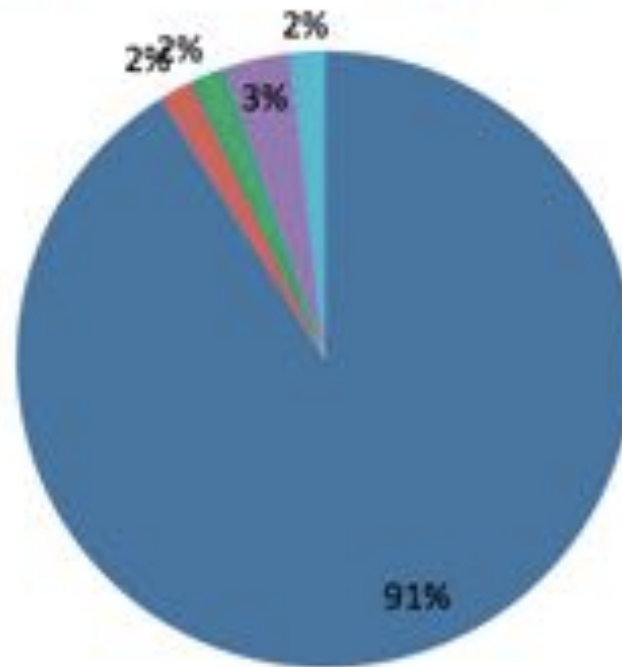
How willing are you to help implement local strategies in MDC to make it more age friendly?



SUMMIT EVALUATION

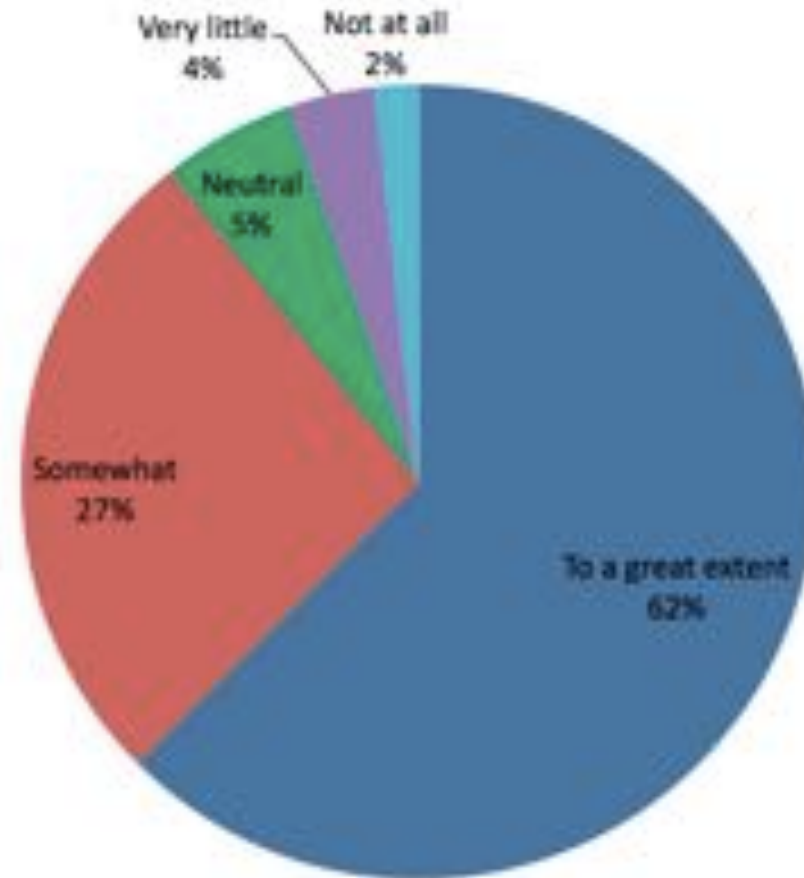
Who bears greatest responsibility for well being of older adults?

■ Everyone ■ Federal Government ■ State ■ City ■ County



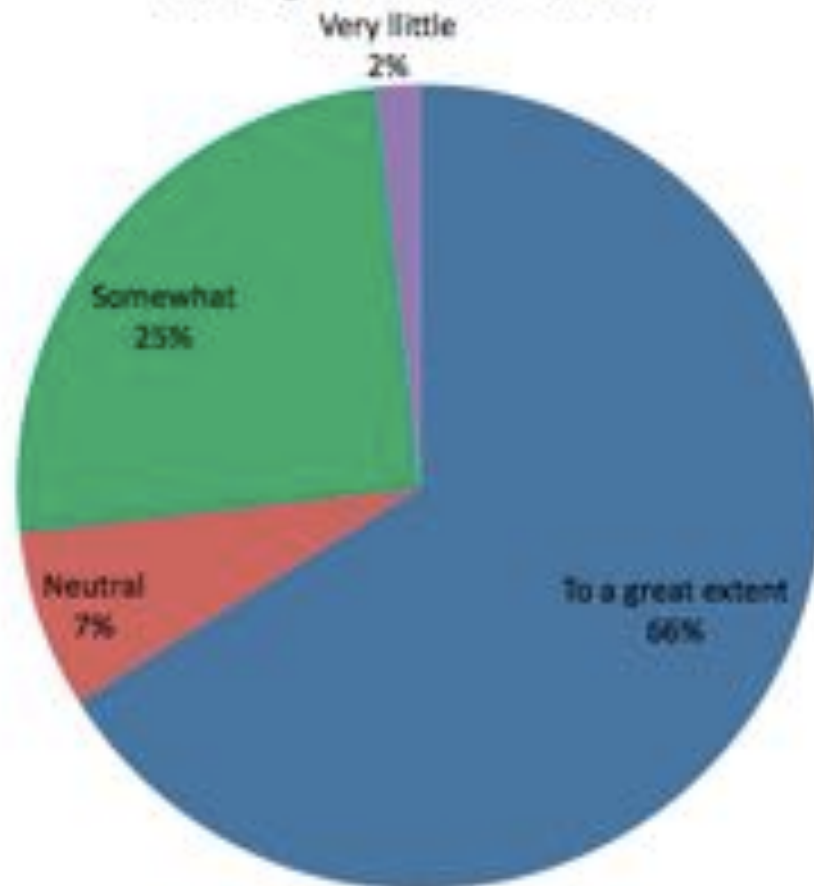
SUMMIT EVALUATION

Summit met expectations about what you were going to learn from it



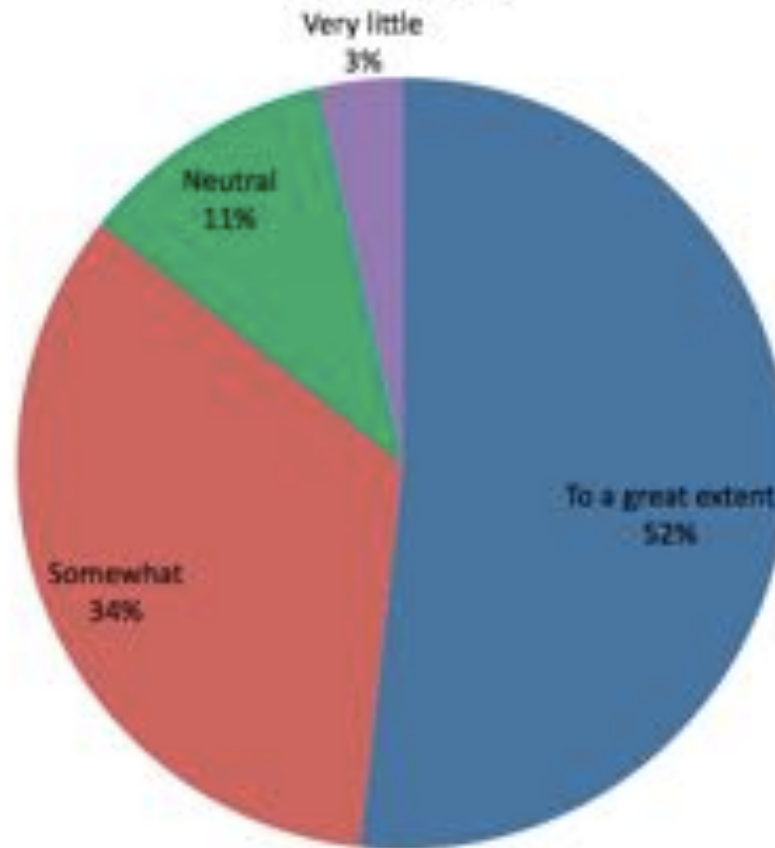
SUMMIT EVALUATION

Summit increased awareness of older adult issues and strategies to address them



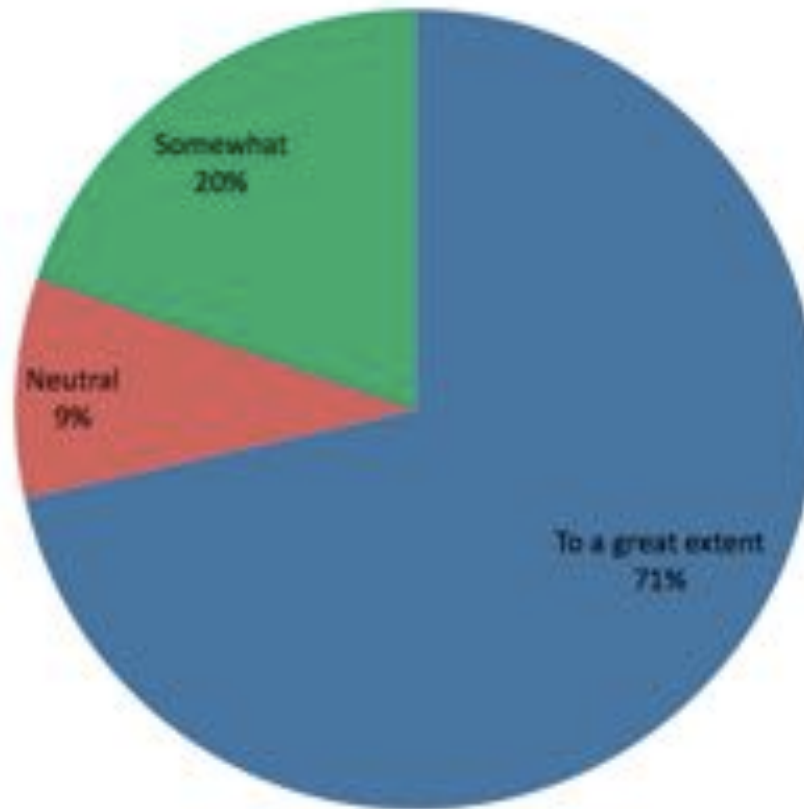
SUMMIT EVALUATION

Summit presented best practices in developing age-friendly communities

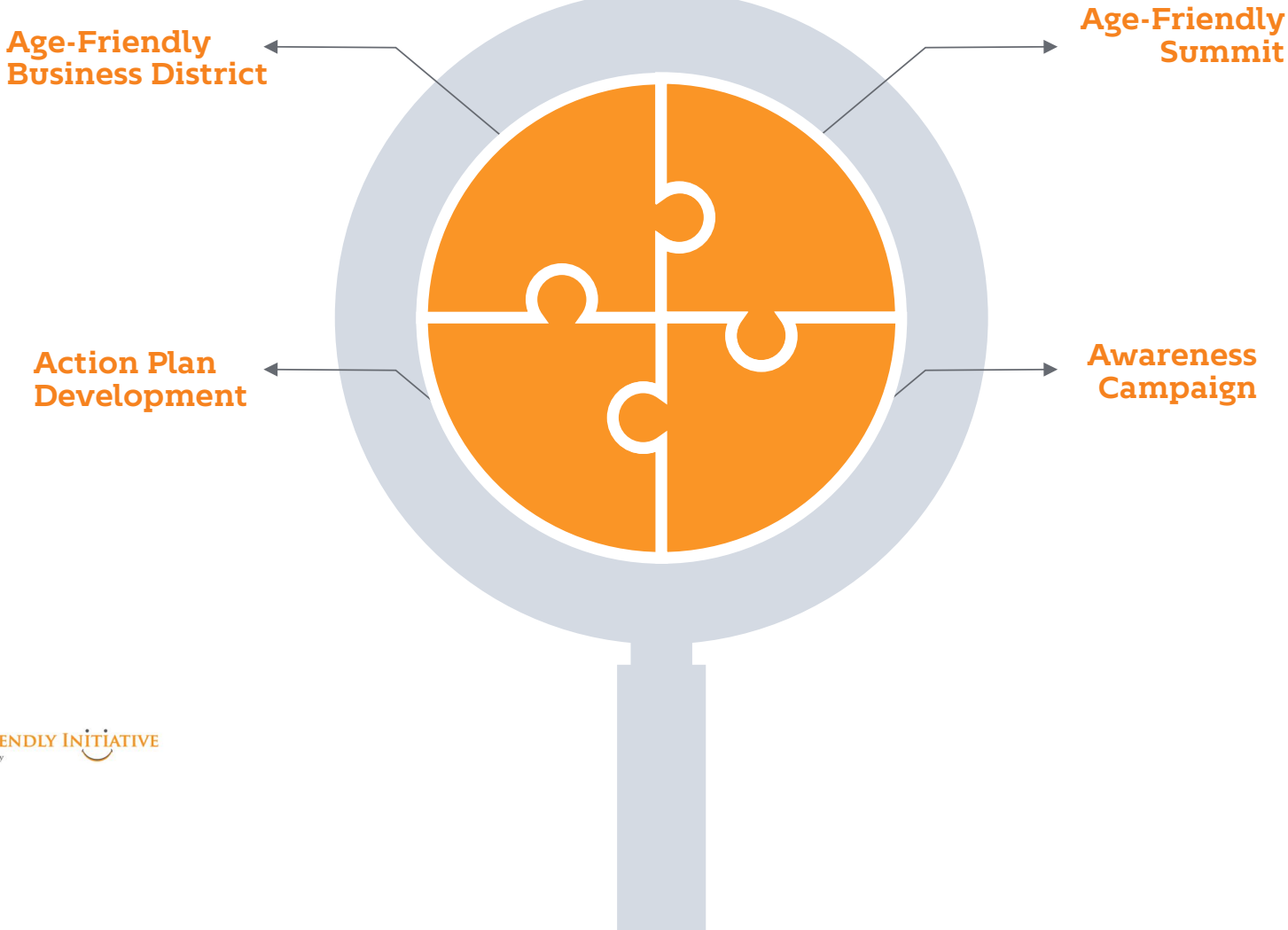


SUMMIT EVALUATION

Summit demonstrated need for investment in development of age-friendly environments, transportation, and housing



EVALUATION PLAN





THE ROAD
AHEAD

GOING FORWARD: WHAT'S NEXT?



CONTINUED LEADERSHIP



FINANCIAL & IN-KIND SUPPORT



PRIORITY AREAS & POTENTIAL PROJECTS



PRIORITY AREAS & POTENTIAL PROJECTS

Outdoor Spaces & Buildings

Parks & Programming

- Toolkit Promotion
- Parks Standards Workshop
- Parks Programming Workshop
- Education/Awareness for Community



Housing

Affordable Housing

- Develop Education Materials
- Provide Education to Key Stakeholders
- Research & Advocate for Policy Modifications

Transportation

Active Transportation & Safe Streets

- Complete Streets Promotion & Adoption
- Walking Audits
- Safe Routes to Age in Place
- Better Data on Public Transportation
- Partner with Trolley & Other Transit Services





PARTNER
FEEDBACK

MEETINGS & NEXT STEPS



Look for our Emails, Updates & Requests for Feedback

We look forward to your input

Let us know what you are working on!

Help us share our age-friendly achievements through our network

Next Steering Committee Meeting

October 2015

WEBSITE & SOCIAL MEDIA



www.AgeFriendlyMiami.org



Facebook.com/AgeFriendlyMiami



Twitter.com/AgeFriendlyMIA

THANK YOU!

www.AgeFriendlyMiami.org

isabel@urbanhs.com

AGE FRIENDLY INITIATIVE
Miami-Dade County 