



AGE FRIENDLY INITIATIVE
Miami-Dade County

Miami-Dade Age-Friendly Initiative

September 28, 2016

Anamarie Garces, MPH

Executive Director, Urban Health Partnerships
Miami-Dade Age-Friendly Initiative

Miami-Dade

Age-Friendly Initiative

“An Age-friendly city is an inclusive and accessible ¹ urban environment that promotes active aging”

The Miami-Dade Age-Friendly Initiative is a collaborative effort focused on sustainable changes and efforts in order to create a community where older adults of all ages can stay active, engaged, and healthy with dignity and enjoyment.

WHY ARE WE HERE TODAY?

FOCUS ON TRANSPORTATION

- Demonstrate the need for investment and focus on age-friendly transportation
- Discuss current resources in our community
- Share strategies you may be able to implement within your own communities
- Discuss opportunities and barriers to changes at the local level



NEED FOR AN AGE-FRIENDLY FOCUS

- Across the globe, people are living longer and our populations are growing older.
- Miami-Dade has the largest population of older adults in the State of Florida with over half a million older adults age 60 and over in the County.
- That population is expected to continue to grow to over 800,000 by 2040, representing 25% of the total population of Miami-Dade.

Older adults are a PRIZED DEMOGRAPHIC with an active voting record, significant buying power, and a wealth of job experience.



**THEY ARE AN IMPORTANT PART
OF WHAT MAKES MIAMI-DADE
DIVERSE AND DYNAMIC.**

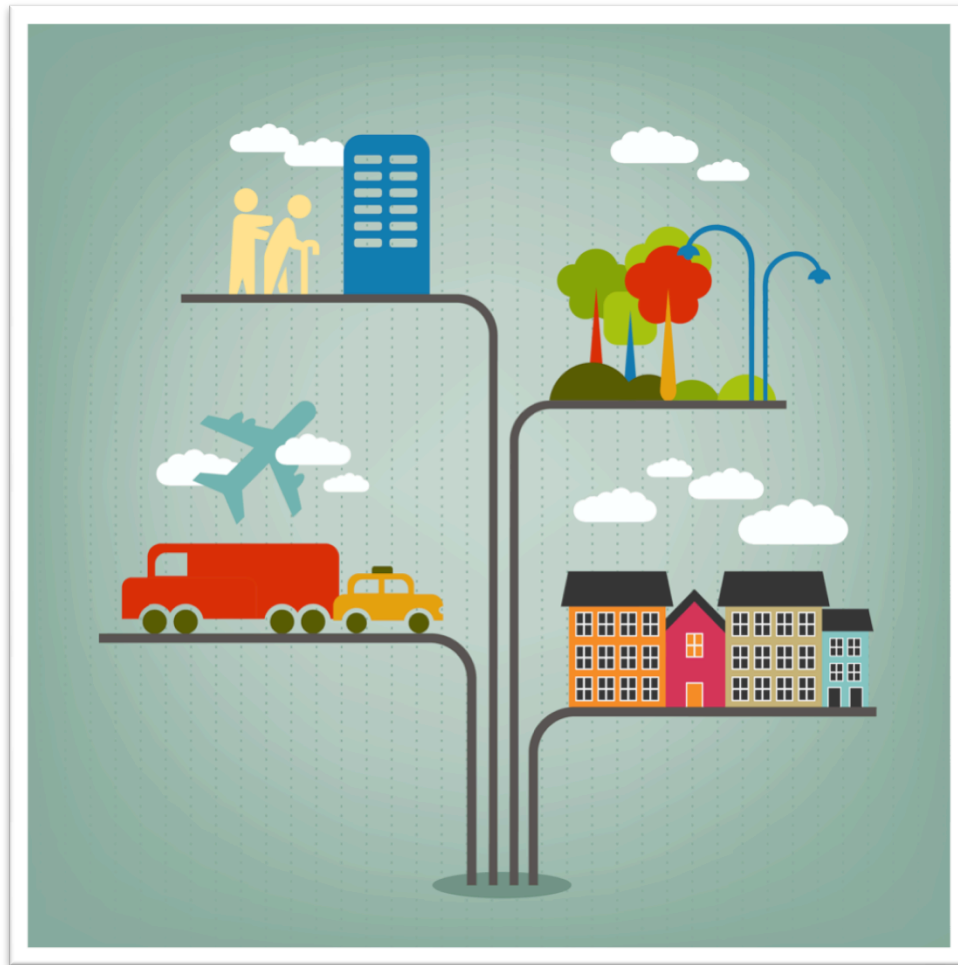
NEED FOR AN AGE-FRIENDLY FOCUS

- But, **most communities were not built for this shift in demographics.** Our economies, policies, and communities were not built to accommodate an aging population or aging in place.
- **How well Miami-Dade responds to the aging phenomenon and meets the needs of older adults will depend on how well we prepare our communities to do so;**
- **And how we can work collectively toward sustainable change to ensure our community is a place where people of all ages can live with the quality of life that they need and deserve.**

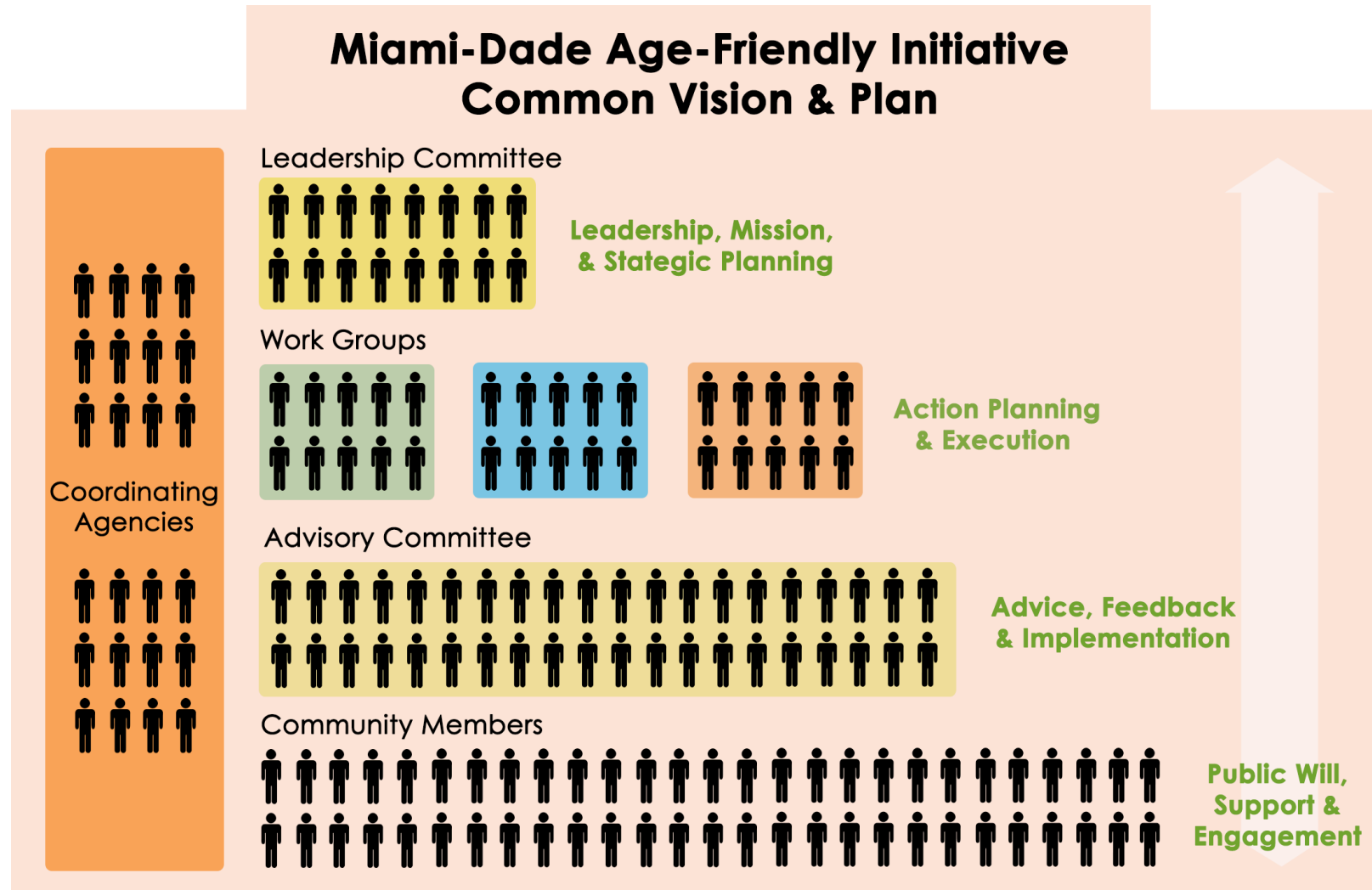


NEED FOR AN AGE-FRIENDLY FOCUS

The Advantage: Age-friendly communities are good for **everyone!**



Age-Friendly Initiative: Collaboration



MAJOR ACCOMPLISHMENTS

- Age-Friendly Policy Modifications
 - Comprehensive Development Master Plan
 - Long Range Transportation Plan
- Age-Friendly Parks & Standards
- Safe Routes to Aging In Place
- Age Friendly Business District
- Study of community leader views and attitudes
- Summit & Awareness Campaign
- **Action Plan**

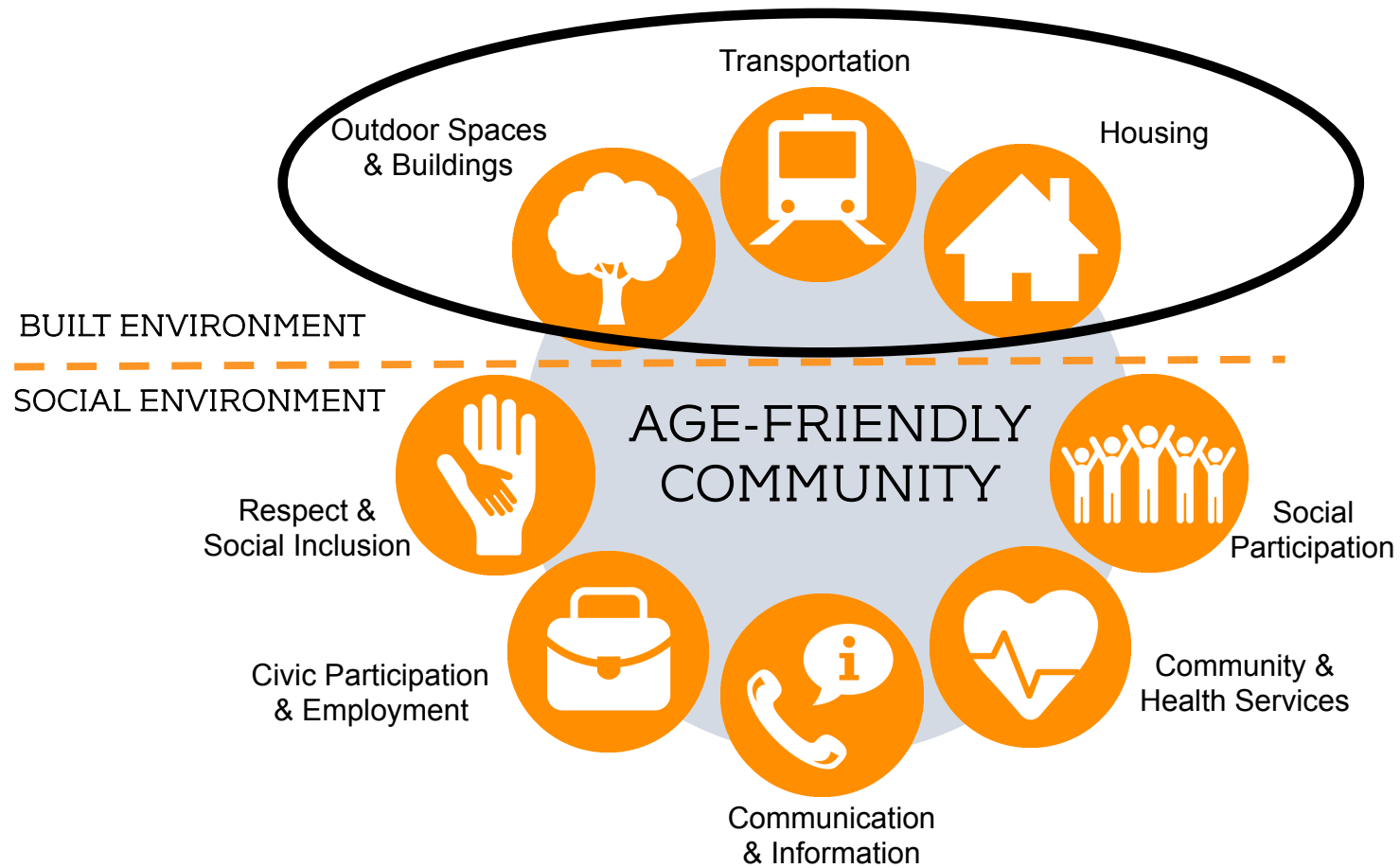


Priorities & Action Plan

- Developed multi-sectorial work group to develop plan using RBA framework
- Created *Action Plan for an Age-Friendly Miami-Dade* (available at www.agefriendlymiami.org/actionplan)
- Identified three initial priority areas



AGE-FRIENDLY DOMAINS



Adapted from: Suzanne Garon, University of Sherbrooke

*Priority
domain*

TRANSPORTATION



Our Vision

Older adults utilize a variety of types of transportation they want and need to move throughout the community.

Why?

The ability to easily access desired destinations is vital to independent living; transportation is one of the most important components of active aging and the ability to age in place. ¹

Transportation Strategies

- **OLDER ADULT ENGAGEMENT:** Engage older adults in the planning and implementation process of strategies.
- **OLDER ADULT REPRESENTATION:** Identify boards or groups that should include an older adult advocate on the committee or council.
- **MOTORIZED & ON-DEMAND TRANSPORTATION:** Ensure older adults have the opportunity to safely drive as well as have knowledge of and access to on-demand transportation services.
- **OLDER ADULTS IN ALL POLICIES:** Review policies in order to determine if older adults are considered or should be considered and included.
- **ACTIVE TRANSPORTATION & SAFE STREETS:** Advocate and implement streets that are safe for all modes, users and mobility.
- **BETTER ACCESS & QUALITY OF TRANSIT STOPS:** Ensure that older adults have knowledge of resources for transit and how to use it, as well as have better access to quality transit stops.

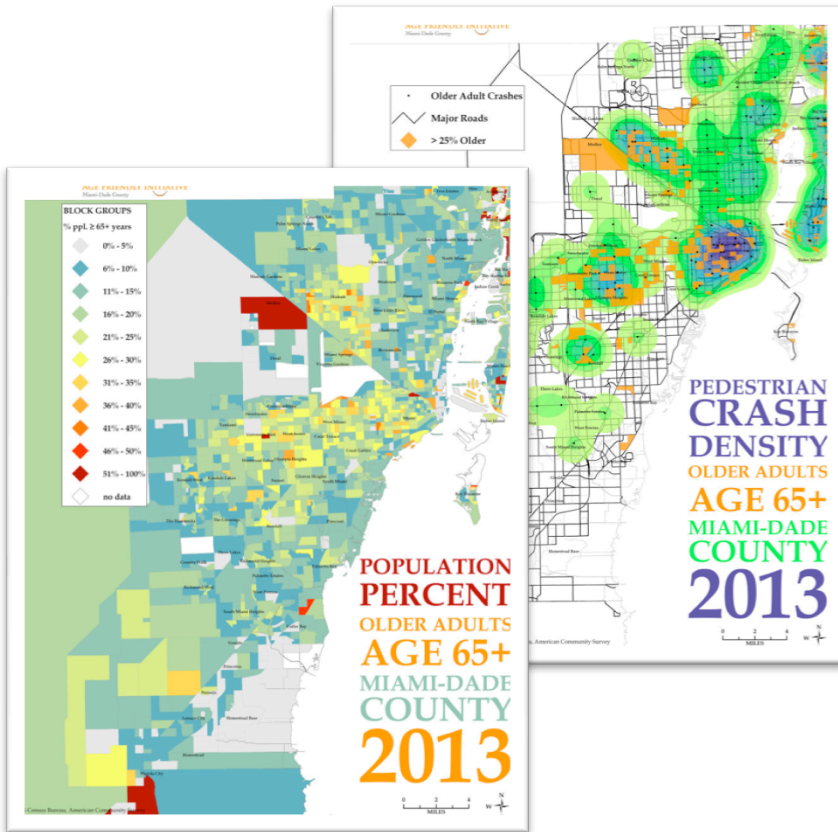
WHAT ELSE ARE WE WORKING ON?



Steps You Can Take

- Sign the pledge to take steps toward making your community more age-friendly
- Download and review our Action Plan
- Access resources and tools on our website
- Reach out to us via email, phone, or on our website
- Join our Advisory Committee, which works at the County level
- Assign a municipal staff person to focus on older adult issues or train staff to consider older adults throughout their planning processes
- Become an Age-Friendly Ambassador

RESOURCES



RESOURCES





FOLLOW US



www.AgeFriendlyMiami.org



[Twitter.com/AgeFriendlyMIA](https://twitter.com/AgeFriendlyMIA)

THANK YOU!

www.AgeFriendlyMiami.org

isabel@urbanhs.com

AGE FRIENDLY INITIATIVE
Miami-Dade County

