



AGE FRIENDLY INITIATIVE
Miami-Dade County

Miami-Dade Age-Friendly Initiative

September 7, 2016

Isabel Rovira, MPH

Coordinator, Miami-Dade Age-Friendly Initiative

Miami-Dade

Age-Friendly Initiative

“An Age-friendly city is an inclusive and accessible ¹ urban environment that promotes active aging”

The Miami-Dade Age-Friendly Initiative is a collaborative effort focused on sustainable changes and efforts in order to create a community where older adults of all ages can stay active, engaged, and healthy with dignity and enjoyment.

WHY ARE WE HERE TODAY?

FOCUS ON PARKS & OUTDOOR SPACES

- Demonstrate the need for investment in the development of age-friendly parks, outdoor spaces, and/or environments
- Discuss components of an Age-Friendly Park or Outdoor Spaces
- Share strategies you may be able to implement within your own communities
- Discuss opportunities and barriers to changes at the local level



NEED FOR AN AGE-FRIENDLY FOCUS

- Across the globe, people are living longer and our populations are growing older.
- Miami-Dade has the largest population of older adults in the State of Florida with over half a million older adults age 60 and over in the County.
- That population is expected to continue to grow to over 800,000 by 2040, representing 25% of the total population of Miami-Dade.

Older adults are a PRIZED DEMOGRAPHIC with an active voting record, significant buying power, and a wealth of job experience.



**THEY ARE AN IMPORTANT PART
OF WHAT MAKES MIAMI-DADE
DIVERSE AND DYNAMIC.**

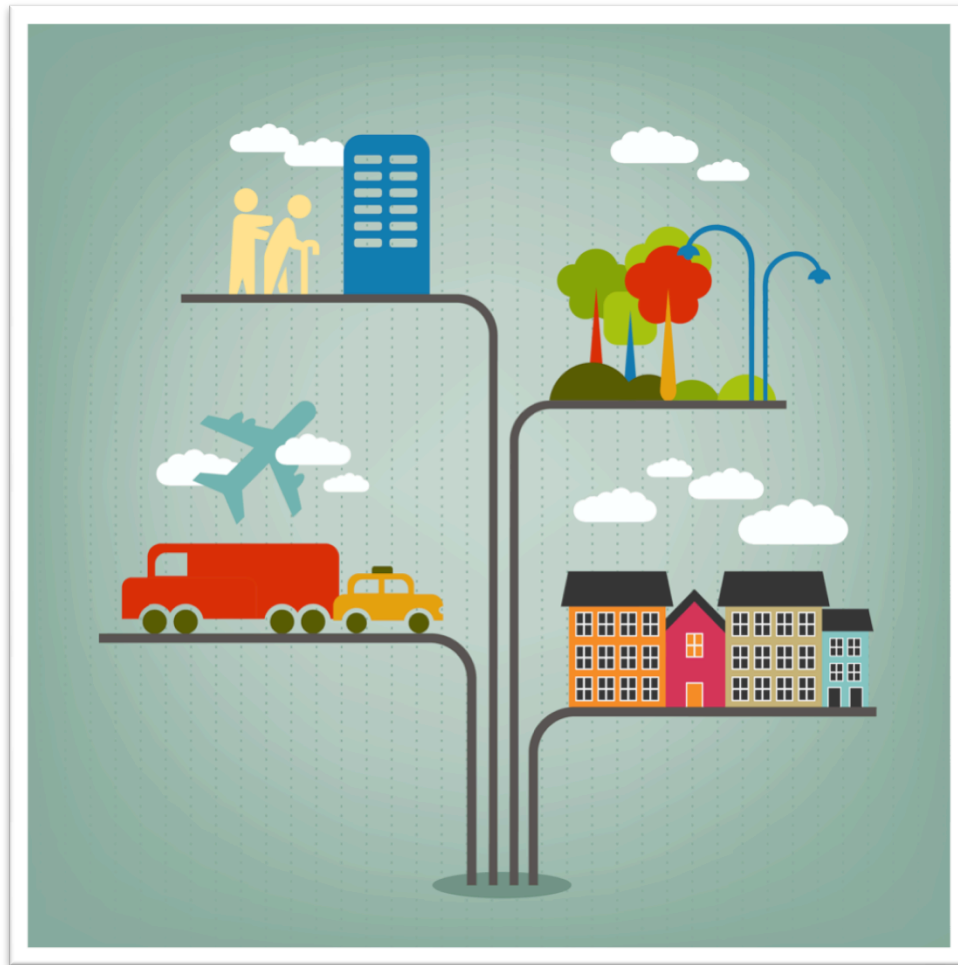
NEED FOR AN AGE-FRIENDLY FOCUS

- But, **most communities were not built for this shift in demographics.** Our economies, policies, and communities were not built to accommodate an aging population or aging in place.
- **How well Miami-Dade responds to the aging phenomenon and meets the needs of older adults will depend on how well we prepare our communities to do so;**
- **And how we can work collectively toward sustainable change to ensure our community is a place where people of all ages can live with the quality of life that they need and deserve.**

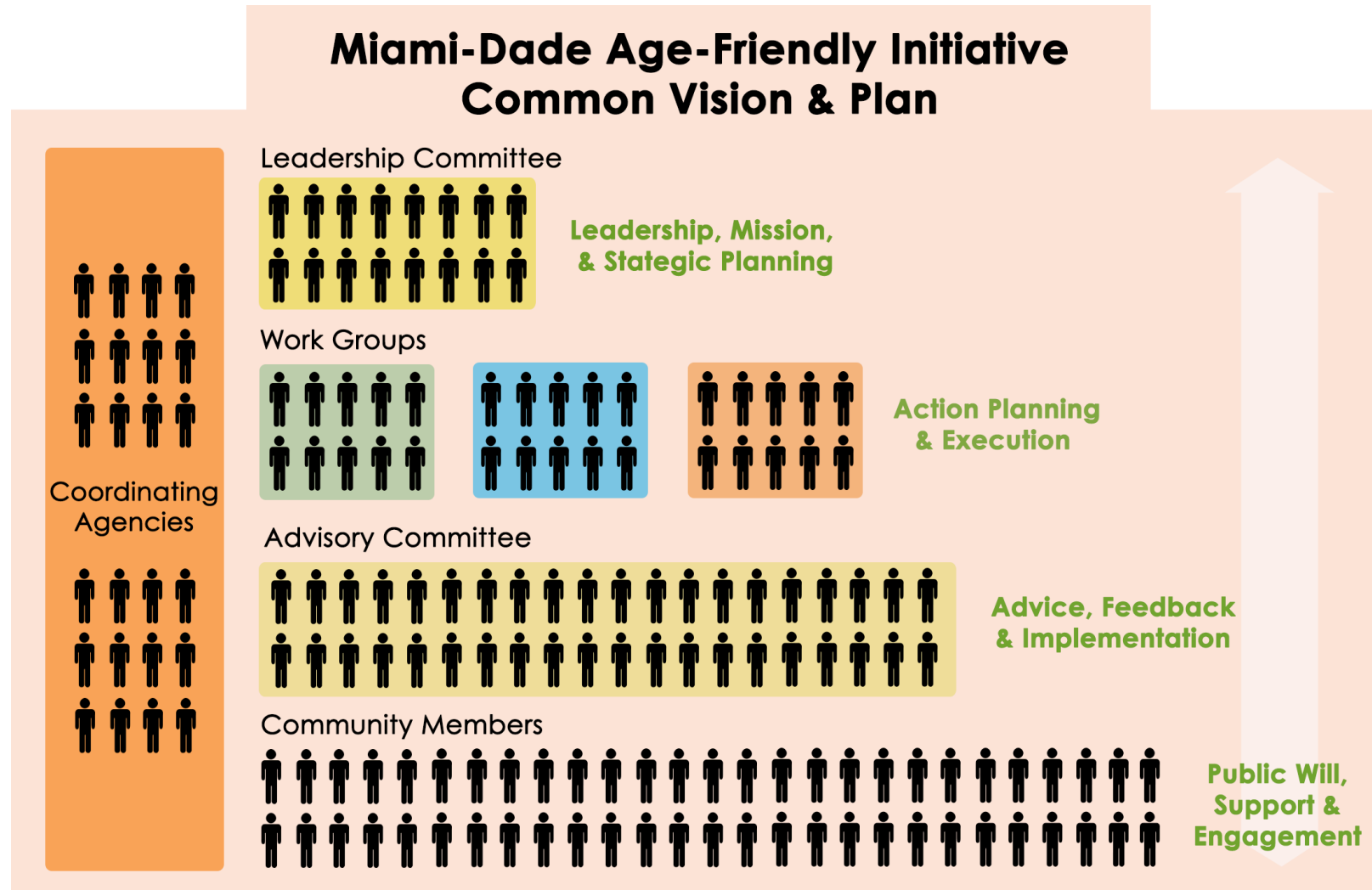


NEED FOR AN AGE-FRIENDLY FOCUS

The Advantage: Age-friendly communities are good for **everyone!**



Age-Friendly Initiative: Collaboration



MAJOR ACCOMPLISHMENTS

- Age-Friendly Policy Modifications
 - Comprehensive Development Master Plan
 - Long Range Transportation Plan
- Age-Friendly Parks & Standards
- Safe Routes to Aging In Place
- Age Friendly Business District
- Study of community leader views and attitudes
- Summit & Awareness Campaign
- **Action Plan**

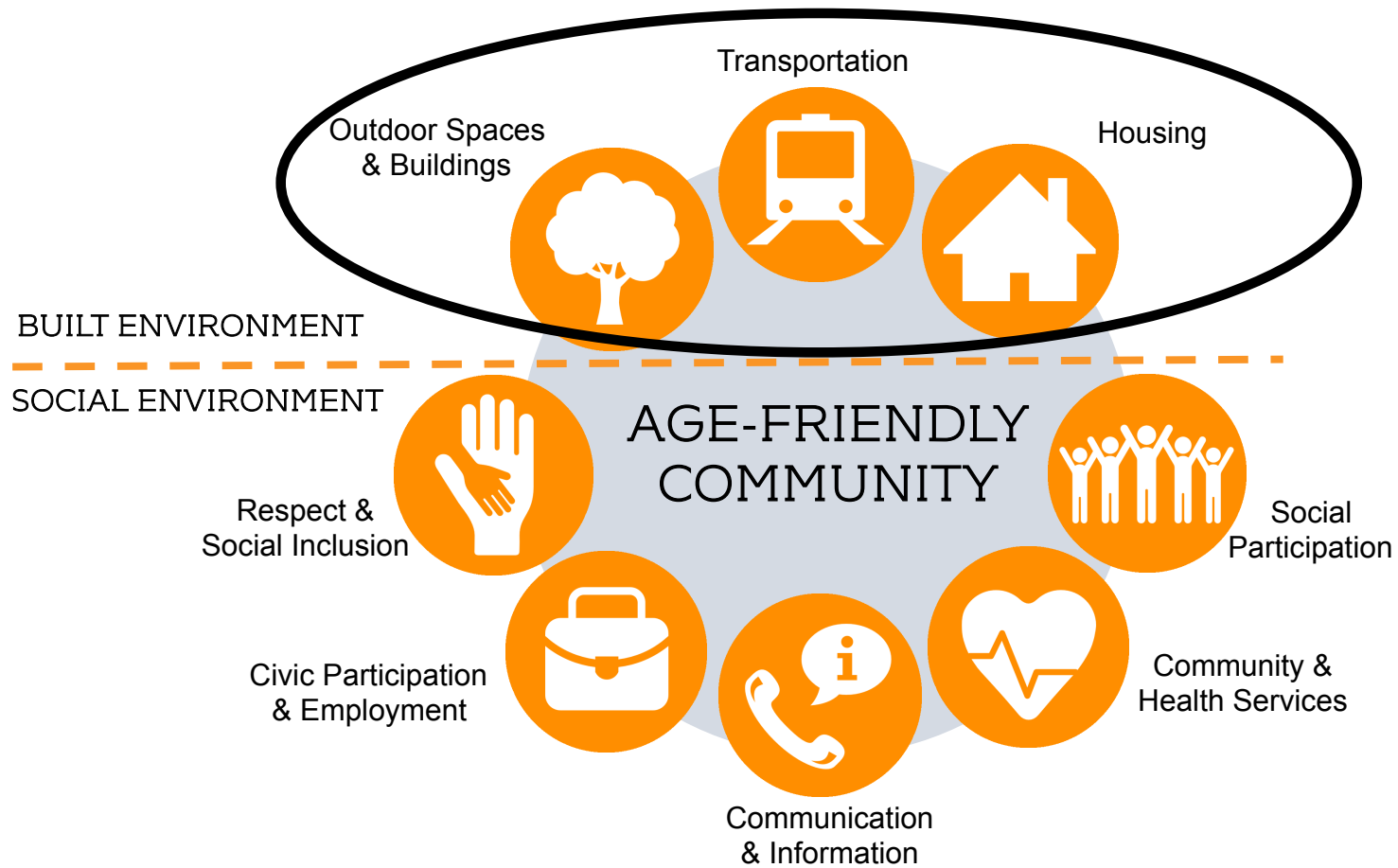


Priorities & Action Plan

- Developed multi-sectorial work group to develop plan using RBA framework
- Created *Action Plan for an Age-Friendly Miami-Dade* (available at www.agefriendlymiami.org/actionplan)
- Identified three initial priority areas



AGE-FRIENDLY DOMAINS



Adapted from: Suzanne Garon, University of Sherbrooke

Priority
domain

OUTDOOR SPACES & BUILDINGS



Our Vision

Older adults have a safe and enjoyable physical environment in which to live and be active.

Why?

Safe and enjoyable public spaces and physical environments encourage citizens to utilize them more, interact with their communities and get moving through biking and walking.¹

Outdoor Spaces & Buildings Strategies

- **OLDER ADULT ENGAGEMENT:**
Engage older adults in the planning and implementation process of strategies.
- **OLDER ADULTS IN ALL POLICIES:**
Review policies related to outdoors spaces, buildings, and community design in order to determine if older adults are considered or should be considered and included in the policies.
- **OLDER ADULT REPRESENTATION:**
Identify boards related to Outdoor Spaces & Buildings and community design that should include an older adult advocate on the committee or council.
- **PARKS & PROGRAMMING:**
Establish safe Parks and Programs that meet Age-Friendly Park standards through proximity, standards, and promotion.
- **AGE-FRIENDLY BUSINESSES:**
Increase the number of age-friendly businesses in Miami-Dade County that employ the same type of age-friendly standards that we want to see in parks and public spaces.
- **PLACEMAKING:** Improve the sense of place, comfort, and interconnectedness of communities by promoting age-friendly amenities and events, as well as connectivity between public spaces and neighborhoods.

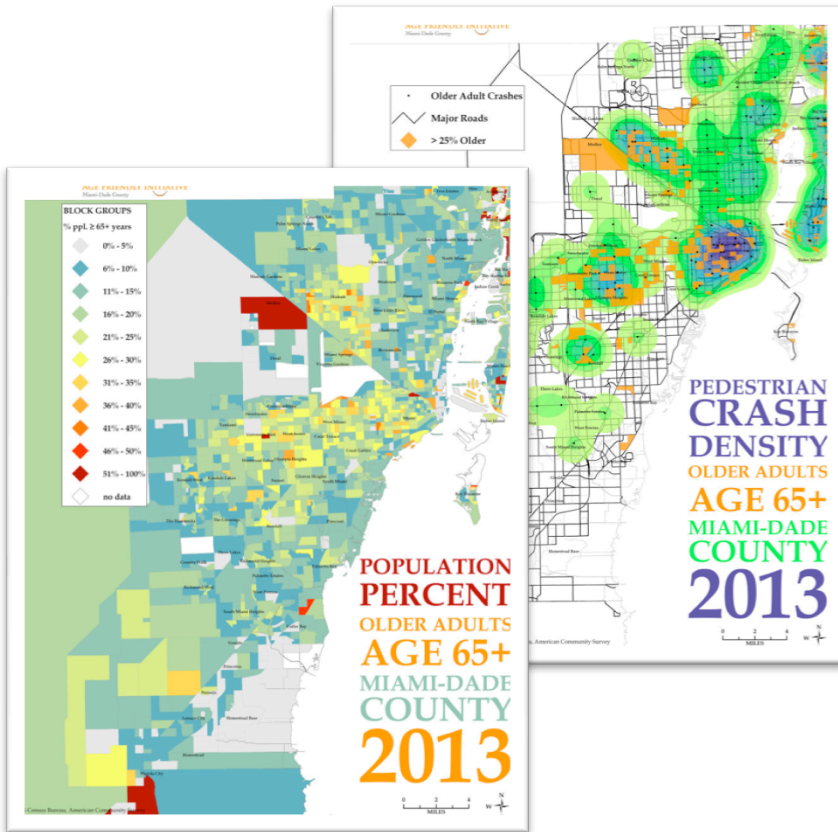
WHAT ELSE ARE WE WORKING ON?



Steps You Can Take

- Sign the pledge to take steps toward making your community more age-friendly
- Download and review our Action Plan
- Access resources and tools on our website
- Reach out to us via email, phone, or on our website
- Join our Advisory Committee, which works at the County level
- Assign a municipal staff person to focus on older adult issues or train staff to consider older adults throughout their planning processes
- Become an Age-Friendly Ambassador

RESOURCES



RESOURCES





FOLLOW US



www.AgeFriendlyMiami.org



[Twitter.com/AgeFriendlyMIA](https://twitter.com/AgeFriendlyMIA)

THANK YOU!

www.AgeFriendlyMiami.org

isabel@urbanhs.com

AGE FRIENDLY INITIATIVE
Miami-Dade County

