



Safe Mobility for Life: Aging Road User Data in Miami-Dade County

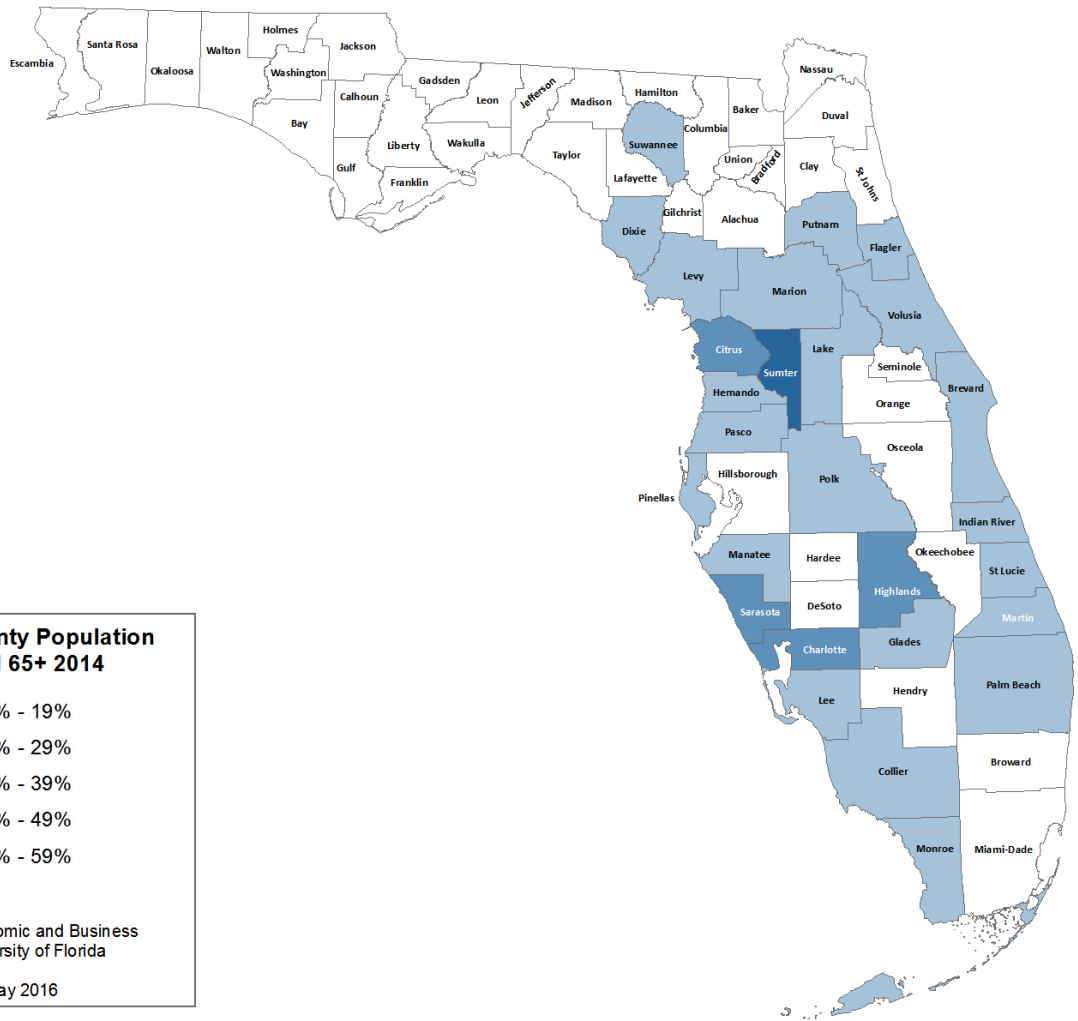


An Aging Road User



☀ Someone who is a driver, passenger, pedestrian, bicyclist, transit-rider, motorcyclist, or operator of a non-motorized vehicle who is 50 years of age or older, with a special focus on the 65 year and older age group



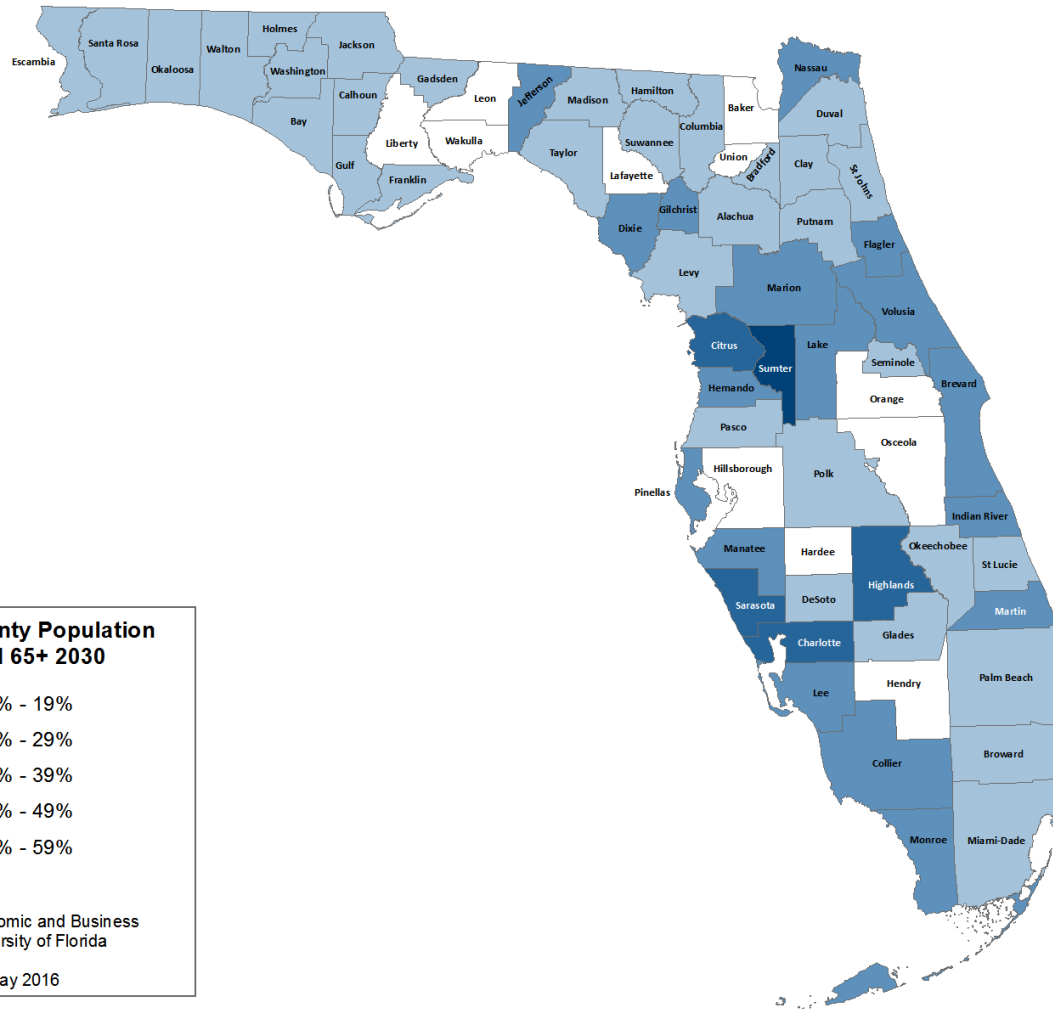


% of County Population Aged 65+ 2014

- 10% - 19%
- 20% - 29%
- 30% - 39%
- 40% - 49%
- 50% - 59%

Data Source:
Bureau of Economic and Business
Research, University of Florida

Publish Date: May 2016



% of County Population Aged 65+ 2030

Lightest Blue	10% - 19%
Light Blue	20% - 29%
Medium Blue	30% - 39%
Dark Blue	40% - 49%
Darkest Blue	50% - 59%

Data Source:
Bureau of Economic and Business
Research, University of Florida

Publish Date: May 2016



Department of
ELDER AFFAIRS
STATE OF FLORIDA



U.S. Department
of Transportation
**Federal Highway
Administration**



THE FLORIDA STATE UNIVERSITY
PEPPER INSTITUTE ON AGING AND PUBLIC POLICY



FIU Nicole Wertheim College of
Nursing & Health Sciences
FLORIDA INTERNATIONAL UNIVERSITY

Safety is Golden

Safe Mobility for Life Coalition



NSU
NOVA SOUTHEASTERN
UNIVERSITY
Tampa Campus



UF College of Public Health
and Health Professions
Institute for Mobility, Activity,
and Participation
UNIVERSITY of FLORIDA



★★★★★
NHTSA
www.nhtsa.gov



THE FLORIDA STATE UNIVERSITY
COLLEGE OF MEDICINE



DEO
FLORIDA DEPARTMENT of
ECONOMIC OPPORTUNITY

FOTA
Florida Occupational Therapy Association

Coalition's Approach



- ☀ Balance safety and mobility needs of our growing aging population
- ☀ Promoting a positive and empowering approach to aging road user safety
- ☀ Working together to improve safety, access, and mobility by implementing a comprehensive Aging Road User Strategic Safety Plan



Aging Road Users (65+) Data

Statewide



☀ Crashes: 133,069

☀ 10.9% Increase

☀ Fatalities: 540

☀ 6.9% Increase

☀ Injuries: 33,556

☀ 9.8% Increase

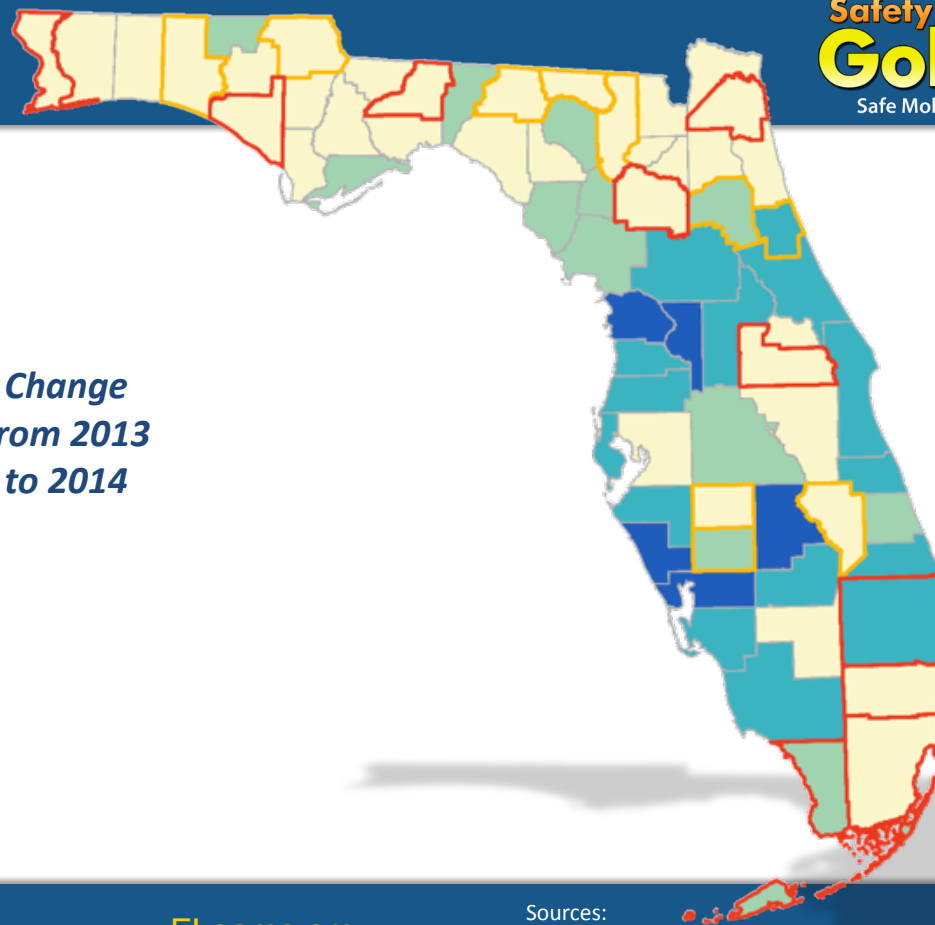
☀ Licensed Drivers: 3,049,833

☀ 2.3% Increase

☀ Population: 3,630,717

☀ 4.3% Increase

*Change
from 2013
to 2014*



www.FLsams.org

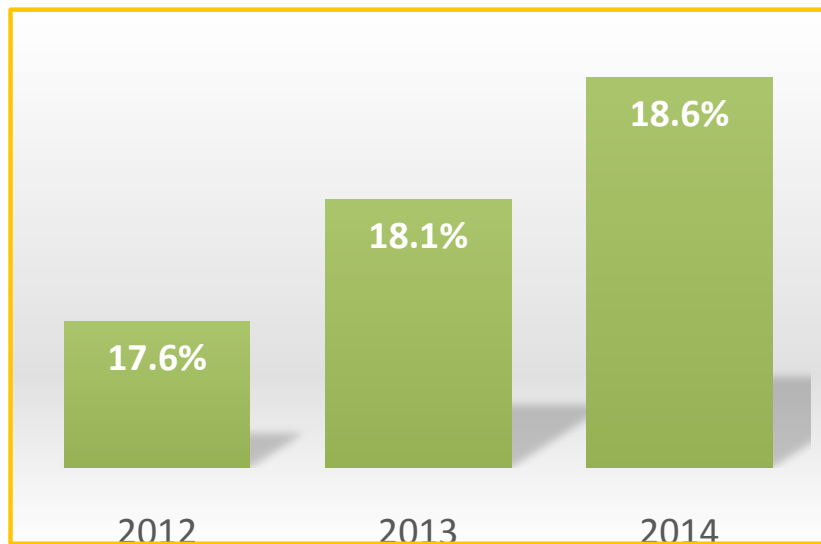
Sources:
Florida Department of Highway Safety and Motor Vehicles
University of Florida Bureau of Economic and Business Research

Aging Road Users (65+) Data

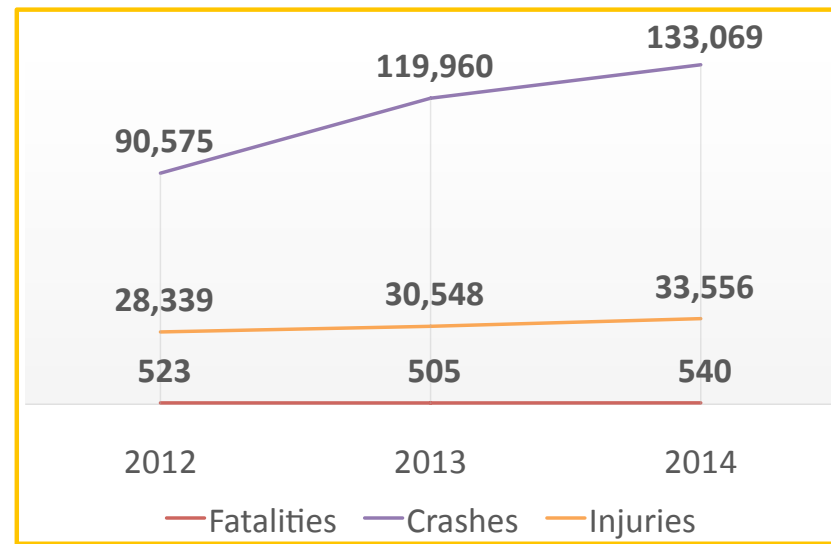
Statewide



☀ Proportion of Population 65+



☀ Crash Trends 65+



Aging Road Users (65+) Data

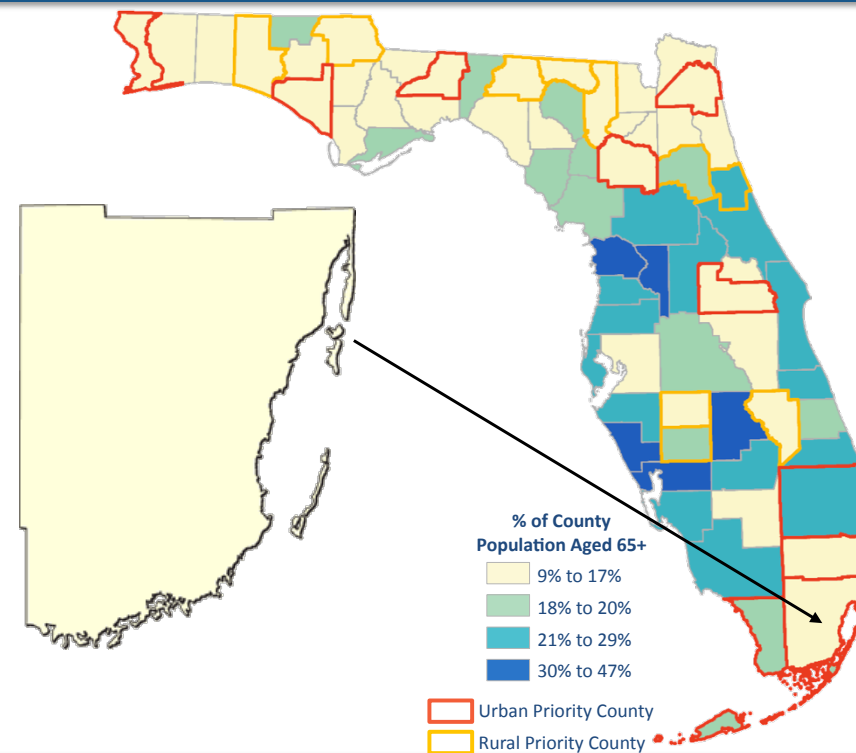
Miami-Dade County

2016
Urban
Priority
County



- ☀ Crashes: 23,454
 - ☀ 14.6% Increase
- ☀ Fatalities: 69
 - ☀ 43.8% Increase
- ☀ Injuries: 4,204
 - ☀ 13.3% Increase
- ☀ Licensed Drivers: 270,529
 - ☀ 1.9% Increase
- ☀ Population: 394,848
 - ☀ 4.5% Increase

Change
from 2013
to 2014



www.FLsams.org

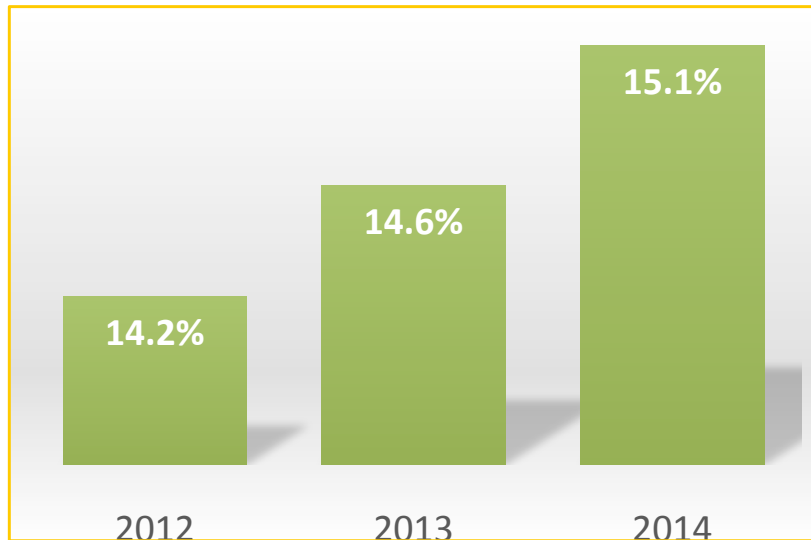
Sources:
Florida Department of Highway Safety and Motor Vehicles
University of Florida Bureau of Economic and Business Research

Aging Road Users (65+) Data Miami-Dade County

2016
Urban
Priority
County



☀ Proportion of Population 65+



☀ Crash Trends 65+

