

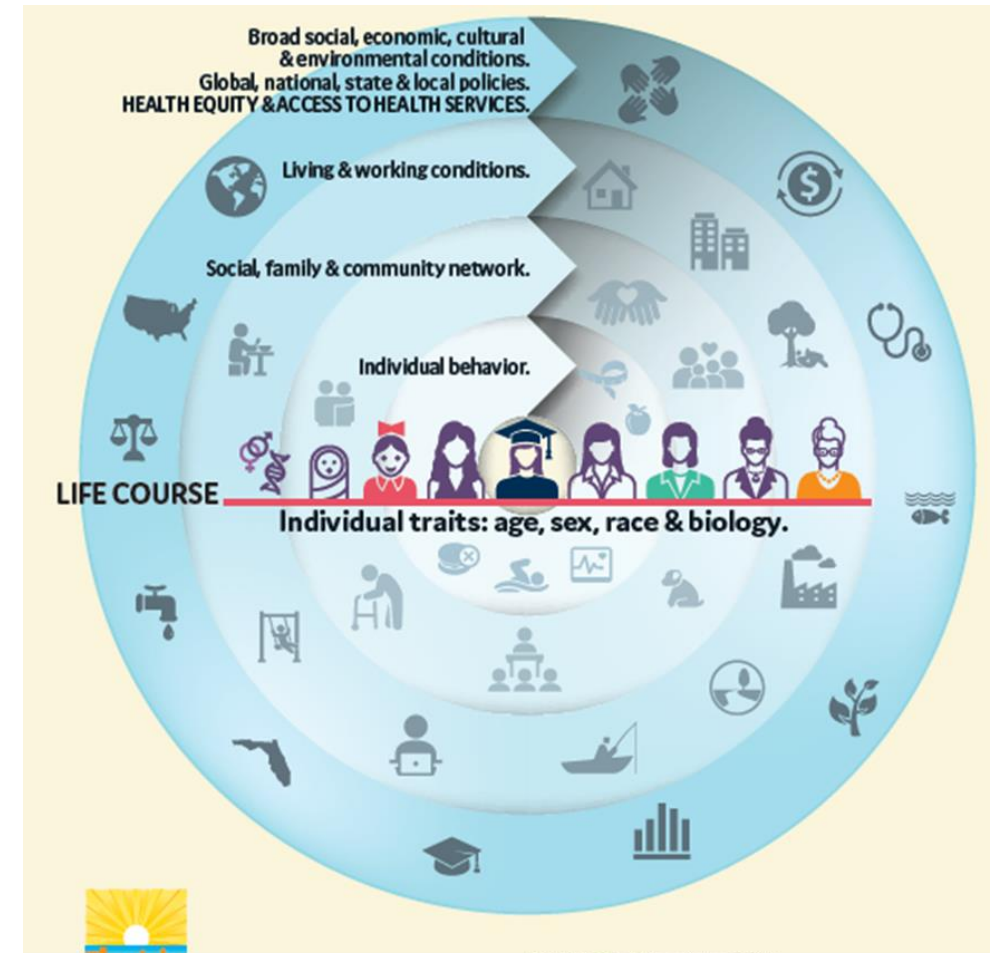
Working Toward an Age-Friendly Florida



Jennifer Johnson, MPH
Interim Assistant Deputy Secretary for Health
Florida Department of Health

State Health Improvement Plan

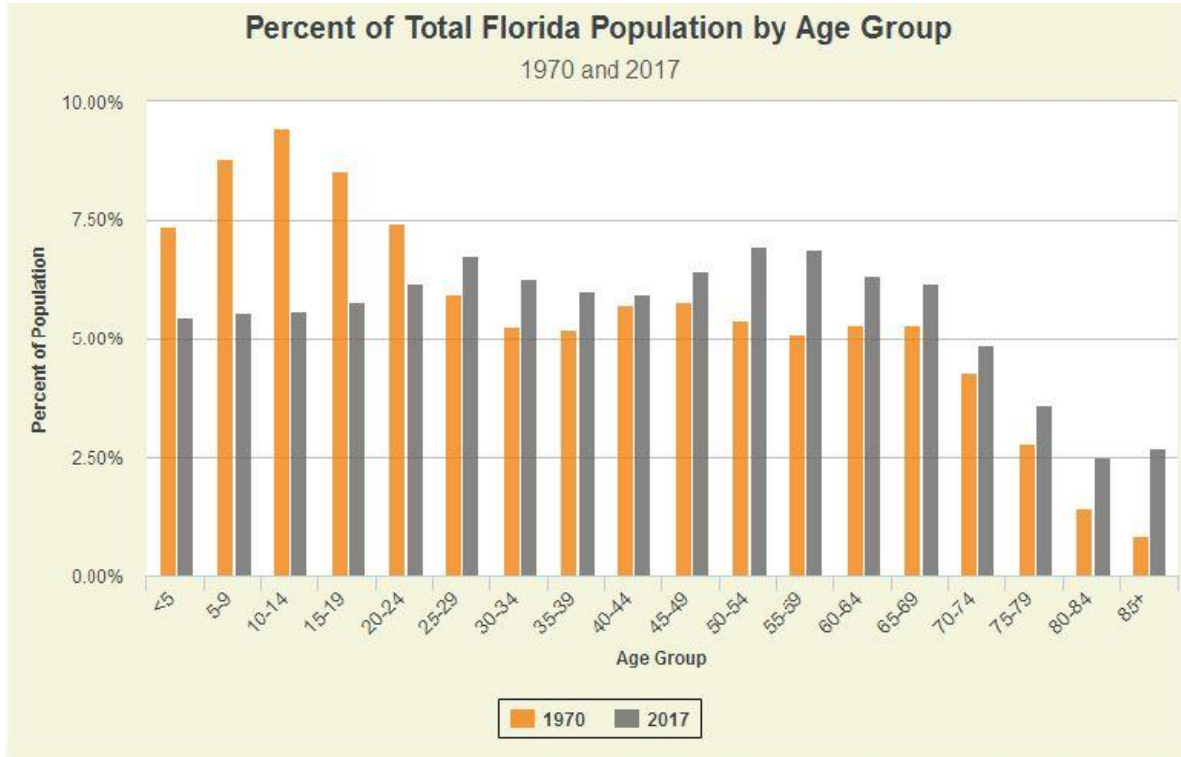
- 2017-2021 State Health Improvement Plan (SHIP)
 - ❖ Outlines goals for Florida's public health system
 - ❖ Sets health equity as a foundation
 - ❖ Achieves broad partnership engagement
 - ❖ Emphasizes policy and system change and growth



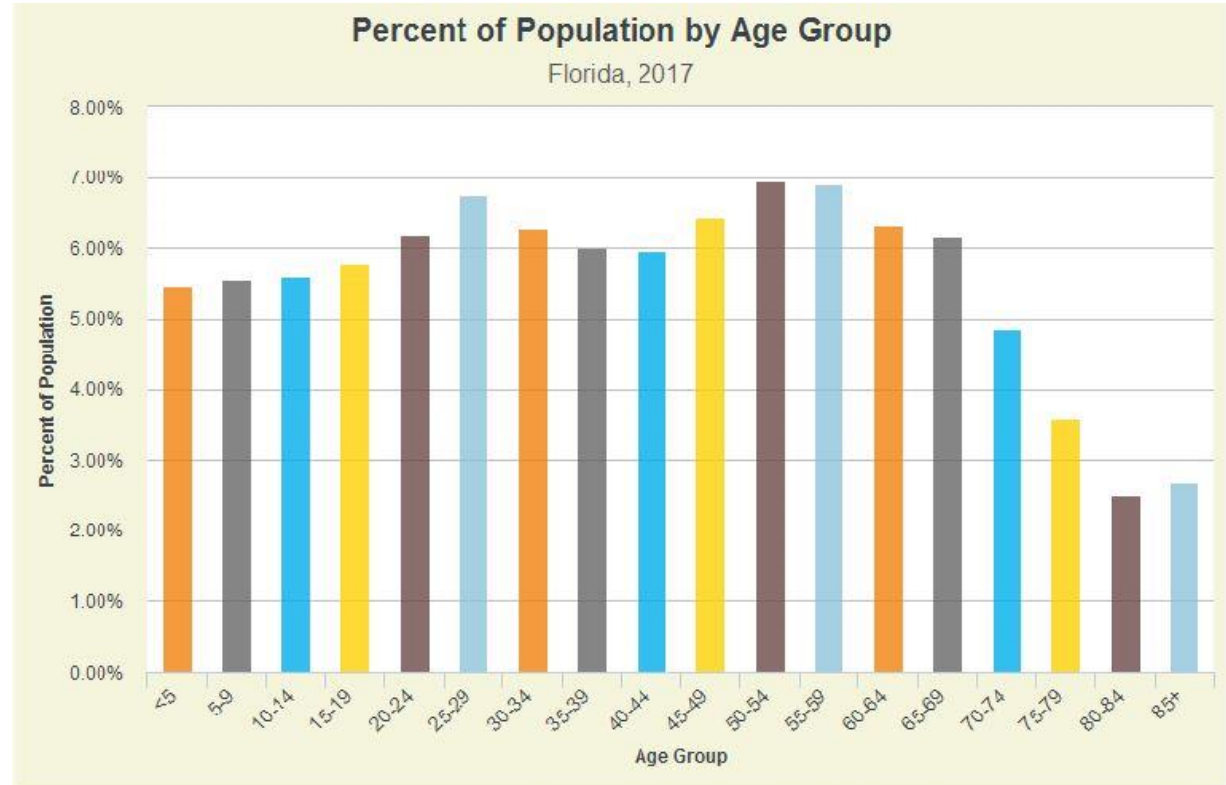
Wide Range of SHIP Partners



Florida's Elder Population



Source: Florida Legislature, Office of Economic and Demographic Research.

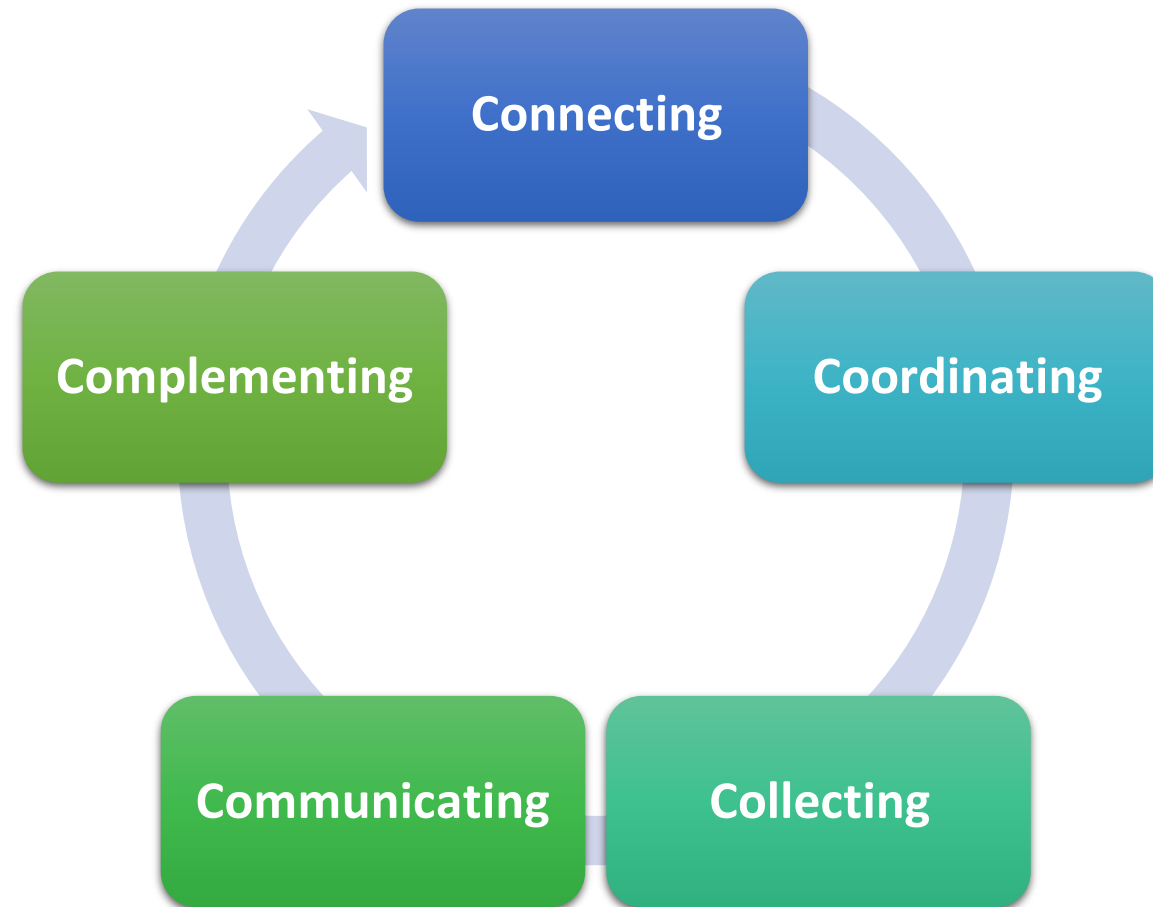


Source: Florida Legislature, Office of Economic and Demographic Research.

Elder Summit October 2017

- Trust For America's Health (TFAH) and John A. Hartford Foundation's convened national, state and local stakeholders
- Summit hosted in Tampa in Oct 2017
- Discussed how public health could improve the health and well-being of elders through contributions to an age-friendly society

Framework for Age-Friendly Public Health System

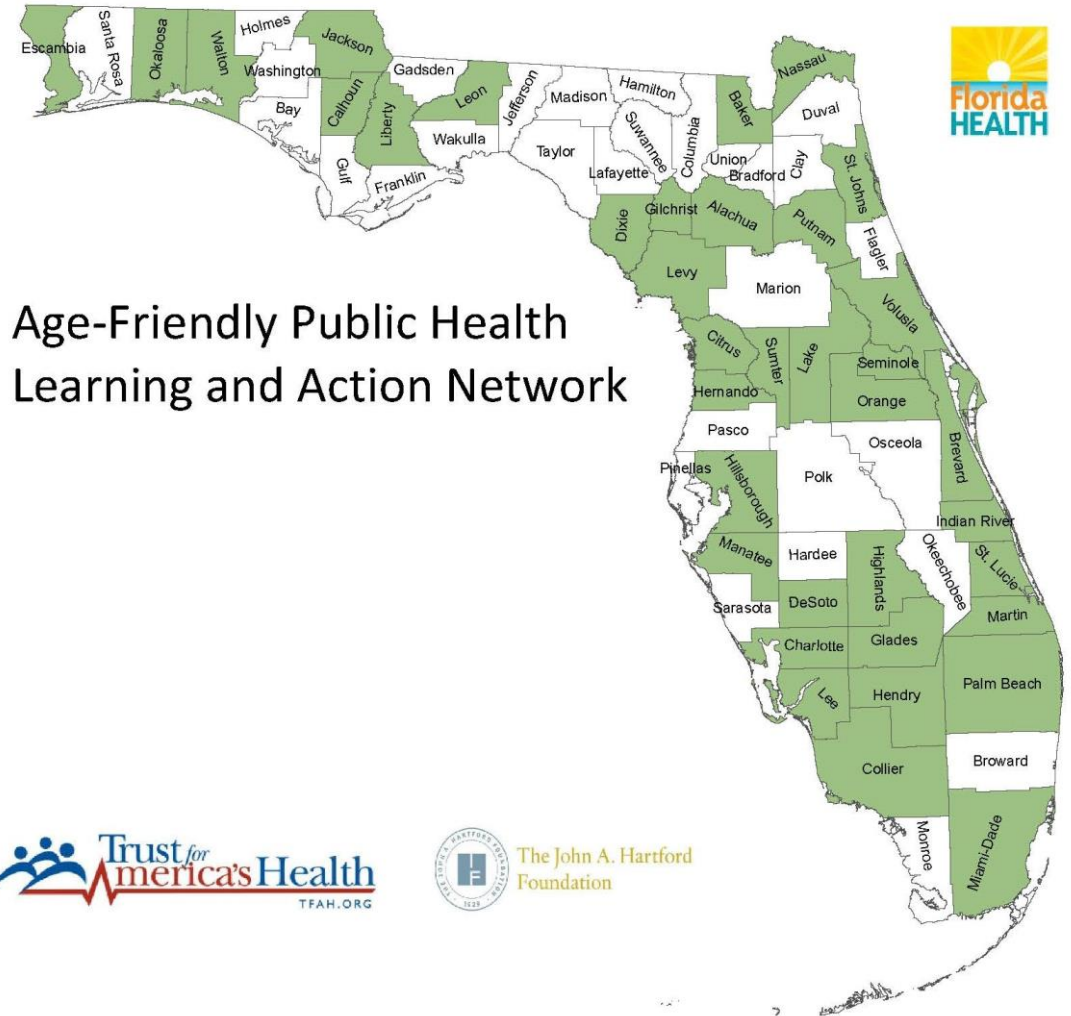


DOH and TFAH Collaboration

- Funded by John A. Hartford Foundation
- Two-year collaboration to promote Age-Friendly Public Health Systems
 - ❖ Advisory committee of experts representing multiple sectors
 - ❖ Communities working toward Age-Friendly Community designation through the process
 - ❖ Learning collaboratives with DOH county health departments (CHDs) to share and encourage adoption of framework

Age-Friendly Public Health Learning and Action Network

- TFAH provides technical assistance, training, and tools to 37 CHDs
 - ❖ Explore and adopt new age-friendly roles
 - ❖ Analyze data to identify and prioritize the health needs of older adults
 - ❖ Create action plans to establish new partnerships with aging stakeholders and initiate projects



Creating an Age-Friendly Public Health Action Plan

- ❖ Vision
- ❖ Priority health issues
- ❖ Data collection/analysis
- ❖ Landscape analysis
- ❖ Infrastructure
- ❖ Partners
- ❖ Barriers/challenges
- ❖ Opportunities



For older people in our community to have a healthy and productive life! Add “life to your years”!

An age-friendly community for people of all ages, races, ethnicity and poverty levels.

To be among the leaders in creating a vibrant, well served community enjoyed by all supported by a diverse and highly collaborative network of partners.

An age-friendly county that is empowered to engage in healthy, safe, and active lifestyles through strong partnerships and locally available programs and resources.

Aging in Florida Profile from CHARTS

- Data from 2014-2017
- Indicator Categories
 - ❖ Longevity (i.e. three-year life expectancy)
 - ❖ Population
 - ❖ Family and Living Arrangements
 - ❖ Social, Financial and Transportation Opportunity
 - ❖ Health and Healthcare Availability
- **FLHealthCHARTS.com** (under County Profile>Population Specific)
<http://www.flhealthcharts.com/ChartsReports/rdPage.aspx?rdReport=ChartsProfiles.AgingInFloridaProfile>

Aging In Florida Profile

Select a County, Year and click on Display Report button.

Select County: Select Year:

 [Print/PDF](#)  [Export to Excel](#)

Aging In Florida Profile, Alachua County, Florida - 2017

Indicator	Measure	Year(s)	County		State	
			Count	Percent/Rate	Count	Percent/Rate
Longevity						
3-year Life Expectancy ^{1, 25}	Years	2015-17	79.1 (78.4 - 79.7)		79 (79.6 - 79.7)	
Population¹						
<input type="checkbox"/> Total	Count	2017	259,349		20,555,728	

Indicator	Measure	Year(s)	County		State	
			Count	Percent/Rate	Count	Percent/Rate
<16	Percent	2017	41,968	16.2	3,654,475	17.8
16-17	Percent	2017	4,839	1.9	476,757	2.3
18-49	Percent	2017	135,464	52.2	8,206,510	39.9
50-54	Percent	2017	13,499	5.2	1,426,204	6.9
55-59	Percent	2017	14,739	5.7	1,416,889	6.9
60-64	Percent	2017	14,140	5.5	1,301,038	6.3
65-69	Percent	2017	12,453	4.8	1,267,153	6.2
70-74	Percent	2017	8,360	3.2	999,467	4.9
75-79	Percent	2017	5,546	2.1	738,324	3.6
80-84	Percent	2017	3,806	1.5	516,233	2.5
85+	Percent	2017	4,535	1.7	552,678	2.7
Elder Dependency Ratio	Ratio	2017		1:19		1:31.8
Youth Dependency Ratio	Ratio	2017		1:23		1:28.5

Population ¹						
+ Total	Count	2017	259,349		20,555,728	
+ White Non-Hispanic	Count	2017	160,695		11,254,094	
+ Black Non-Hispanic	Count	2017	51,908		3,204,550	
+ Other Minority Non-Hispanic	Count	2017	22,366		961,230	
+ Hispanic	Count	2017	24,380		5,135,854	
+ Males 50+	Count	2017	34,910		3,812,628	
+ Females 50+	Count	2017	42,168		4,405,358	
Family and Living Arrangements						
Individuals Living Alone 65+ ²	Percent	2013-17	9,237	28.6	945,363	24.6
Individuals Living with Spouse 65+ ²	Percent	2013-17	16,077	49.8	2,023,106	52.6
Individuals Living with Unmarried Partner 65+ ²	Percent	2013-17	499	1.5	97,956	2.5
Marital Status 45-54 ³						
Now Married	Percent	2013-17	15,263	56.9	1,611,219	58.5
Widowed	Percent	2013-17	516	1.9	55,526	2.0
Divorced	Percent	2013-17	5,531	20.6	555,776	20.2
Separated	Percent	2013-17	777	2.9	103,572	3.8
Never Married	Percent	2013-17	4,711	17.6	425,447	15.5
Marital Status 55-64 ³						
Now Married	Percent	2013-17	16,919	58.1	1,589,442	60.0
Widowed	Percent	2013-17	1,488	5.1	145,711	5.5
Divorced	Percent	2013-17	6,229	21.4	565,623	21.4
Separated	Percent	2013-17	732	2.5	75,862	2.9
Never Married	Percent	2013-17	3,724	12.8	271,931	10.3
Marital Status 65+ ³						
Now Married	Percent	2013-17	17,664	53.1	2,190,736	55.8
Widowed	Percent	2013-17	7,979	24.0	950,000	24.2
Divorced	Percent	2013-17	5,019	15.1	557,407	14.2
Separated	Percent	2013-17	528	1.6	54,584	1.4
Never Married	Percent	2013-17	2,088	6.3	174,158	4.4
+ Grandparents ⁴	Count	2013-17	134,066		13,057,544	

Social, Financial and Transportation Opportunity						
Education 65+ ⁵						
Less than high school education	Percent	2013-17	3,651	11.0	622,205	15.8
High school education	Percent	2013-17	8,589	25.8	1,222,176	31.1
Some college education	Percent	2013-17	6,299	18.9	770,277	19.6
Associate's degree education	Percent	2013-17	2,478	7.4	257,542	6.6
Bachelor's degree education	Percent	2013-17	5,449	16.4	598,062	15.2
Graduate or professional degree education	Percent	2013-17	6,816	20.5	456,627	11.6
Limited English Proficiency 65+ ⁶	Count	2013-17	1,349	4.1	511,567	13.0
55-64 ⁷						
Below 50% of Poverty	Percent	2013-17	1,933	6.7	147,829	5.6
Below 75% of Poverty	Percent	2013-17	3,007	10.4	235,201	9.0
Below 100% of Poverty	Percent	2013-17	4,214	14.5	338,479	12.9
Below 125% of Poverty	Percent	2013-17	5,193	17.9	448,207	17.1
Below 150% of Poverty	Percent	2013-17	6,205	21.4	554,582	21.1
Below 175% of Poverty	Percent	2013-17	7,248	25.0	665,337	25.3
Below 185% of Poverty	Percent	2013-17	7,580	26.2	705,066	26.8
Below 200% of Poverty	Percent	2013-17	8,055	27.8	772,754	29.4
Below 300% of Poverty	Percent	2013-17	11,928	41.2	1,188,259	45.2
Below 400% of Poverty	Percent	2013-17	15,920	55.0	1,540,418	58.7
Below 500% of Poverty	Percent	2013-17	18,886	65.2	1,812,632	69.0
500% or more of Poverty	Percent	2013-17	10,085	34.8	813,747	31.0
65+ ⁷						
Below 50% of Poverty	Percent	2013-17	1,044	3.2	131,556	3.4
Below 75% of Poverty	Percent	2013-17	1,701	5.2	230,676	6.0
Below 100% of Poverty	Percent	2013-17	2,905	8.9	399,320	10.3
Below 125% of Poverty	Percent	2013-17	4,234	13.0	591,889	15.3
Below 150% of Poverty	Percent	2013-17	5,811	17.9	801,291	20.8
Below 175% of Poverty	Percent	2013-17	7,419	22.8	1,004,974	26.0
Below 185% of Poverty	Percent	2013-17	8,112	24.9	1,086,375	28.2
Below 200% of Poverty	Percent	2013-17	8,800	27.0	1,208,489	31.3
Below 300% of Poverty	Percent	2013-17	14,158	43.5	1,940,400	50.3
Below 400% of Poverty	Percent	2013-17	18,427	56.6	2,476,596	64.2
Below 500% of Poverty	Percent	2013-17	22,217	69.7	2,964,674	74.9

Below 400% of Poverty	Percent	2013-17	18,427	56.6	2,476,596	64.2
Below 500% of Poverty	Percent	2013-17	22,347	68.7	2,861,671	74.2
500% or more of Poverty	Percent	2013-17	10,197	31.3	997,394	25.8
Employed 65+ ⁸	Percent	2013-17	5,486	16.9	551,120	14.3
Households with annual income less than \$20,000 and householder 65+ ⁹	Percent	2013-17	4,226	20.7	520,739	22.6
Households with annual income \$20,000 - \$49,999 and householder 65+ ⁹	Percent	2013-17	6,738	33.1	830,958	36.1
Households with annual income greater than or equal to \$50,000 and householder 65+ ⁹	Percent	2013-17	9,420	46.2	952,818	41.3
Social Security Beneficiaries ¹⁰	Count	2017	32,950		3,478,703	
Monthly Social Security Income ¹¹	Dollars	2017	1,416		1,382	
Median Household Income for All Ages ¹²	Dollars	2013-17	45,478		50,883	
Median Household Income for 45-64 ¹²	Dollars	2013-17	60,866		60,019	
Median Household Income for 65+ ¹²	Dollars	2013-17	45,889		40,975	
Owner-occupied housing units owned by householder 55-59 ¹³	Percent	2013-17	2,175	36.9	186,558	34.8
Owner-occupied housing units owned by householder 60-64 ¹³	Percent	2013-17	3,085	47.6	234,626	43.2
Owner-occupied housing units owned by householder 65+ ¹³	Percent	2013-17	11,050	68.0	1,216,546	64.1
Owner-occupied housing units with mortgage and householder 55-59 ¹³	Percent	2013-17	3,721	63.1	350,169	65.2
Owner-occupied housing units with mortgage and householder 60-64 ¹³	Percent	2013-17	3,396	52.4	308,722	56.8
Owner-occupied housing units with mortgage and householder 65+ ¹³	Percent	2013-17	5,203	32.0	681,742	35.9
Income Required to Meet Basic Needs for 65+ with Excellent Health ¹⁴						
Single 65+ - Home owner without mortgage	Dollars	2017	21,132		17,604	
Single 65+ - Home owner with mortgage	Dollars	2017	30,240		27,888	
Single 65+ - Renter, one bedroom	Dollars	2017	24,000		21,552	
65+ Couple - Home owner without mortgage	Dollars	2017	32,784		26,028	
65+ Couple - Home owner with mortgage	Dollars	2017	41,892		36,312	
65+ Couple - Renter, one bedroom	Dollars	2017	35,652		29,976	
Income Required to Meet Basic Needs for 65+ with Poor Health ¹⁴						
Single 65+ - Home owner without mortgage	Dollars	2017	23,088		20,580	
Single 65+ - Renter, one bedroom	Dollars	2017	25,956		24,528	
Single 65+ - Home owner with mortgage	Dollars	2017	32,196		30,864	
65+ Couple - Home owner without mortgage	Dollars	2017	36,696		31,980	
65+ Couple - Renter, one bedroom	Dollars	2017	39,564		35,928	
65+ Couple - Home owner with mortgage	Dollars	2017	45,804		42,264	
Households with cost burden above 30% and Income at or below 50% Area						

65+ Couple - Home owner with mortgage	Dollars	2017	45,804		42,264	
Households with cost burden above 30% and Income at or below 50% Area Median Income 65+ ¹⁵	Count	2017	22,258	17.0	2,412,571	19.7
Households receiving food stamps/SNAP that have 1 or more persons 60+ ¹⁶	Count	2013-17	3,012	3.1	406,975	5.4
<input type="checkbox"/> Drivers 50+ ¹⁷	Count	2017	76,517		7,500,220	

Indicator	Measure	Year(s)	County		State	
			Count	Percent/Rate	Count	Percent/Rate
50-59	Count	2017	28,887		2,818,854	

<input type="checkbox"/> Drivers 60+ ¹⁷	Count	2017	47,630		4,681,366	
--	-------	------	--------	--	-----------	--

Indicator	Measure	Year(s)	County		State	
			Count	Percent/Rate	Count	Percent/Rate
60-64	Count	2017	14,352		1,257,950	

<input type="checkbox"/> Drivers 65+ ¹⁷	Count	2017	33,278		3,423,416	
--	-------	------	--------	--	-----------	--

Indicator	Measure	Year(s)	County		State	
			Count	Percent/Rate	Count	Percent/Rate
65-69	Count	2017	12,779		1,151,005	
70-79	Count	2017	13,975		1,536,513	
80-89	Count	2017	5,526		635,046	
90+	Count	2017	998		100,852	

<input type="checkbox"/> Silver Alerts ¹⁸	Count	2017	0		271	
--	-------	------	---	--	-----	--

Indicator	Measure	Year(s)	County		State	
			Count	Percent/Rate	Count	Percent/Rate
<70	Count	2017	0		21	
70-79	Count	2017	0		112	
80-84	Count	2017	0		76	
85+	Count	2017	0		62	

<input type="checkbox"/> Veterans ¹⁹	Percent	2017	16,315	7.7	1,525,395	9.3
---	---------	------	--------	-----	-----------	-----

<input type="checkbox"/> Male Veterans ¹⁹	Percent	2017	14,539	14.3	1,381,169	17.4
--	---------	------	--------	------	-----------	------

+ Drivers 60+ ¹⁷	Count	2017	47,630	4,681,366		
+ Drivers 65+ ¹⁷	Count	2017	33,278	3,423,416		
+ Silver Alerts ¹⁸	Count	2017	0	271		
- Veterans ¹⁹	Percent	2017	16,315	7.7	1,525,395	9.3

Indicator	Measure	Year(s)	County		State	
			Count	Percent/Rate	Count	Percent/Rate
45-64	Percent	2017	5,804	10.5	483,239	8.8
65-84	Percent	2017	5,655	18.7	635,040	18.0
85+	Percent	2017	1,492	32.9	154,675	28.0

- Male Veterans ¹⁹	Percent	2017	14,539	14.3	1,381,169	17.4
-------------------------------	---------	------	--------	------	-----------	------

Indicator	Measure	Year(s)	County		State	
			Count	Percent/Rate	Count	Percent/Rate
45-64	Percent	2017	4,946	19.1	418,089	15.9
65-84	Percent	2017	5,413	39.7	612,168	37.8
85+	Percent	2017	1,444	89.5	149,511	70.0

- Female Veterans ¹⁹	Percent	2017	1,776	1.6	144,228	1.7
---------------------------------	---------	------	-------	-----	---------	-----

Indicator	Measure	Year(s)	County		State	
			Count	Percent/Rate	Count	Percent/Rate
45-64	Percent	2017	859	2.9	65,154	2.3
65-84	Percent	2017	242	1.5	22,878	1.2
85+	Percent	2017	48	1.6	5,162	1.5

Health and Healthcare Availability

Reported good, very good or excellent health status 65+ ²⁰	Percent	2016	76.6	75.7
Reported fair or poor health status 65+ ²⁰	Percent	2016	23.4	24.3
Physically unhealthy days in the past month 65+ ²⁰	Days	2016	4.5	4.9
Meet aerobic activity recommendations 65+ ²⁰	Percent	2016	58.2	45.7
Meet muscle strengthening recommendations 65+ ²⁰	Percent	2016	49.1	31.0
Current smoker 65+ ²⁰	Percent	2016	10.6	8.4
Engage in heavy or binge drinking 65+ ²⁰	Percent	2016	11.9	8.7
Overweight 65+ ²⁰	Percent	2016	30.9	39.7

Overweight 65+ ²⁰	Percent	2016			30.9		39.7
Obese 65+ ²⁰	Percent	2016			32.9		25.8
Have a personal doctor 65+ ²⁰	Percent	2016			92.5		93.2
Could not see a doctor due to cost 65+ ²⁰	Percent	2016			0.8		5.2
Received a flu shot in past year 65+ ²⁰	Percent	2016			65.5		57.4
Ever received a pneumonia vaccine 65+ ²⁰	Percent	2016			82.5		65.6
Visited a dentist or dental clinic in past year 65+ ²⁰	Percent	2016			72.1		68.4
Permanent tooth removed because of tooth decay or gum disease 65+ ²⁰	Percent	2016			56.2		70.2
Ever told they have a depressive disorder 65+ ²⁰	Percent	2016			13.4		11.8
Poor mental health on 14 days or more of last 30 days 65+ ²⁰	Percent	2016			7.3		7.3
Always or usually receive social/emotional support they need 65+ ²⁰	Percent	2010			86.6		79.4
<input type="checkbox"/> Medicare Enrollment ²¹	Count	2017		41,489		4,295,216	

Indicator	Measure	Year(s)	County		State	
			Count	Percent/Rate	Count	Percent/Rate
Original Medicare Enrollment	Count	2017	32,424		2,468,028	
Medicare Advantage & Other Health Plans Enrollment	Count	2017	9,065		1,827,188	

Limited activities due to physical, mental or emotional problem 65+ ²⁰	Percent	2016			33.1		27.1
With A Disability 65+ ²²	Percent	2013-17		11,357	34.9	1,287,862	33.4
<input type="checkbox"/> Hearing Disability 65+ ²²	Percent	2013-17		4,874	15.0	526,035	13.6

Indicator	Measure	Year(s)	County		State	
			Count	Percent/Rate	Count	Percent/Rate
65-74	Percent	2013-17	1,517	7.7	169,547	7.9
75+	Percent	2013-17	3,357	26.2	356,488	20.9

<input type="checkbox"/> Vision Disability 65+ ²²	Percent	2013-17		1,996	6.1	237,952	6.2
--	---------	---------	--	-------	-----	---------	-----

Indicator	Measure	Year(s)	County		State	
			Count	Percent/Rate	Count	Percent/Rate
65-74	Percent	2013-17	830	4.2	82,106	3.8
75+	Percent	2013-17	1,166	9.1	155,846	9.1

<input type="checkbox"/> Cognitive Disability 65+ ²²	Percent	2013-17		2,772	8.5	332,351	8.6
---	---------	---------	--	-------	-----	---------	-----

<input type="checkbox"/> Vision Disability 65+ ²²	Percent	2013-17	1,996	6.1	237,952	6.2
<input type="checkbox"/> Cognitive Disability 65+ ²²	Percent	2013-17	2,772	8.5	332,351	8.6

Indicator	Measure	Year(s)	County		State	
			Count	Percent/Rate	Count	Percent/Rate
65-74	Percent	2013-17	1,068	5.4	103,630	4.8
75+	Percent	2013-17	1,704	13.3	228,721	13.4

<input type="checkbox"/> Ambulatory Disability 65+ ²²	Percent	2013-17	6,919	21.3	815,578	21.1
--	---------	---------	-------	------	---------	------

Indicator	Measure	Year(s)	County		State	
			Count	Percent/Rate	Count	Percent/Rate
65-74	Percent	2013-17	2,689	13.6	297,503	13.8
75+	Percent	2013-17	4,230	33.1	518,075	30.3

<input type="checkbox"/> Self-care Disability 65+ ²²	Percent	2013-17	2,325	7.1	285,593	7.4
---	---------	---------	-------	-----	---------	-----

Indicator	Measure	Year(s)	County		State	
			Count	Percent/Rate	Count	Percent/Rate
65-74	Percent	2013-17	704	3.6	76,640	3.6
75+	Percent	2013-17	1,621	12.7	208,953	12.2

<input type="checkbox"/> Independent Living Disability 65+ ²²	Percent	2013-17	4,443	13.7	514,164	13.3
--	---------	---------	-------	------	---------	------

Indicator	Measure	Year(s)	County		State	
			Count	Percent/Rate	Count	Percent/Rate
65-74	Percent	2013-17	1,295	6.6	134,158	6.2
75+	Percent	2013-17	3,148	24.6	380,006	22.3

Use special equipment due to a health problem 65+ ²⁰	Percent	2016		19.8		19.7
---	---------	------	--	------	--	------

Probable Alzheimer's Cases 65+ ²³	Percent	2017	4,360	12.6	541,446	13.3
--	---------	------	-------	------	---------	------

Hospitalizations due to mental disorders 45-64 ²⁴	Per 100,000	2017	917	1,663.5	66,769	1,221.2
--	-------------	------	-----	---------	--------	---------

Hospitalizations due to mental disorders 65-74 ²⁴	Per 100,000	2017	170	816.8	13,111	578.4
--	-------------	------	-----	-------	--------	-------

Hospitalizations due to mental disorders 75+ ²⁴	Per 100,000	2017	54	388.9	6,334	350.5
--	-------------	------	----	-------	-------	-------

<input type="checkbox"/> Deaths 50+ ²⁵	Per 100,000	2017	1,767	2,292.5	185,849	2,261.5
---	-------------	------	-------	---------	---------	---------

Ever told they have diabetes 65+ ²⁰	Percent	2016		25.8		23.5
--	---------	------	--	------	--	------

<input type="checkbox"/> Self-care Disability 65+ ²²	Percent	2013-17	2,325	7.1	285,593	7.4
<input type="checkbox"/> Independent Living Disability 65+ ²²	Percent	2013-17	4,443	13.7	514,164	13.3
Use special equipment due to a health problem 65+ ²⁰	Percent	2016		19.8		19.7
Probable Alzheimer's Cases 65+ ²³	Percent	2017	4,360	12.6	541,446	13.3
Hospitalizations due to mental disorders 45-64 ²⁴	Per 100,000	2017	917	1,663.5	66,769	1,221.2
Hospitalizations due to mental disorders 65-74 ²⁴	Per 100,000	2017	170	816.8	13,111	578.4
Hospitalizations due to mental disorders 75+ ²⁴	Per 100,000	2017	54	388.9	6,334	350.5
<input type="checkbox"/> Deaths 50+ ²⁵	Per 100,000	2017	1,767	2,292.5	185,849	2,261.5

Indicator	Measure	Year(s)	County		State	
			Count	Percent/Rate	Count	Percent/Rate
Heart Disease	Per 100,000	2017	321	416.5	44,513	541.7
Cancer	Per 100,000	2017	428	555.3	42,899	522.0
Chronic Lower Respiratory Disease	Per 100,000	2017	89	115.5	12,466	151.7
Stroke	Per 100,000	2017	108	140.1	12,237	148.9
Alzheimer's Disease	Per 100,000	2017	31	40.2	6,954	84.6

Ever told they have diabetes 65+ ²⁰	Percent	2016		25.8		23.5
Ever told they had a stroke 65+ ²⁰	Percent	2016		9.5		7.3
Currently have asthma 65+ ²⁰	Percent	2016		6.6		5.9
Ever told they have COPD, emphysema or chronic bronchitis 65+ ²⁰	Percent	2016		5.1		11.9
Ever told they had a heart attack 65+ ²⁰	Percent	2016		14.2		11.9
<input type="checkbox"/> Non-fatal Injuries resulting in hospitalization 50+ ²⁴	Per 100,000	2017	1,066	1,383.0	100,910	1,227.9

Indicator	Measure	Year(s)	County		State	
			Count	Percent/Rate	Count	Percent/Rate
Fall	Per 100,000	2017	662	858.9	65,666	799.1
Poisoning, includes drug poisoning	Per 100,000	2017	98	127.1	9,557	116.3
Firearm	Per 100,000	2017	<5	5.2	274	3.3
Suffocation	Per 100,000	2017	<5	1.3	232	2.8
Traffic crash - vehicle occupant	Per 100,000	2017	52	67.5	3,347	40.7
Being struck by or against objects, excluding vehicles	Per 100,000	2017	25	32.4	2,157	26.2

Fall-related injury in past year 65+ ²⁰	Percent	2016		12.4		9.7
--	---------	------	--	------	--	-----

Data Note(s)

1. Florida Legislature, Office of Economic and Demographic Research (EDR). Population estimates from EDR have been allocated by race based on information from the US Bureau of the Census.
2. US Bureau of the Census, American Community Survey, Table B09021.
3. US Bureau of the Census, American Community Survey, Table S1201.
4. US Bureau of the Census, American Community Survey, Table B10050.
5. US Bureau of the Census, American Community Survey, Table B15001.
6. US Bureau of the Census, American Community Survey, Table B16004.
7. US Bureau of the Census, American Community Survey, Table B17024.
8. US Bureau of the Census, American Community Survey, Table B23001.
9. US Bureau of the Census, American Community Survey, Table B19037.
10. Social Security Administration, OASDI Beneficiaries by State and County, Table 4.
11. Social Security Administration, OASDI Beneficiaries by State and County, Table 5.
12. US Bureau of the Census, American Community Survey, Table B19049.
13. US Bureau of the Census, American Community Survey, Table B25027.
14. [University of Massachusetts, Elder Index](#).
15. [Shimberg Center for Housing Studies, University of Florida, "Households with Householder Age 65 and Older, Cost Burden by Tenure and Income"](#).
16. US Bureau of the Census, American Community Survey, Table S2201.
17. [Florida Department of Highway Safety and Motor Vehicles, "Licensed Drivers by Age, Sex and County"](#).
18. [Florida Department of Law Enforcement, "Silver Alert Monthly Reports"](#).
19. [US Department of Veterans Affairs, National Center for Veterans Analysis and Statistics, "Table 9L: VetPopYYYY County-Level Veteran Population by State Age Group and Gender", select Other Demographics: Counties](#).
20. Florida Department of Health, Behavioral Risk Factor Surveillance System 2016.
21. [Centers for Medicare & Medicaid Services, "Enrollment Dashboard Data File"](#).
22. US Bureau of the Census, American Community Survey, Table S1810.
23. 2014 Probable Alzheimer's Cases = (65-74 Population x 0.0336) + (75-84 Population x 0.1767) + (85+ Population x 0.4441) based on FL Dept of Elder Affairs Profile of Older Floridians.
2015 Probable Alzheimer's Cases = (65-74 Population x 0.032769) + (75-84 Population x 0.160525) + (85+ Population x 0.411510) based on FL Dept of Elder Affairs Profile of Older Floridians.
2016-2017: Probable Alzheimer's Cases = (65-74 Population x 0.036592) + (75-84 Population x 0.174333) + (85+ Population x 0.433872) based on FL Dept of Elder Affairs Profile of Older Floridians.
24. Florida Agency for Healthcare Administration, Hospitalization Data.
25. Florida Bureau of Vital Statistics, Death Data.

Thank you!

■ Questions?



Jennifer Johnson, MPH
Interim Assistant Deputy Secretary for Health
Florida Department of Health
Jennifer.Johnson@flhealth.gov
(850) 245-4712