



AGE FRIENDLY INITIATIVE
Miami-Dade County

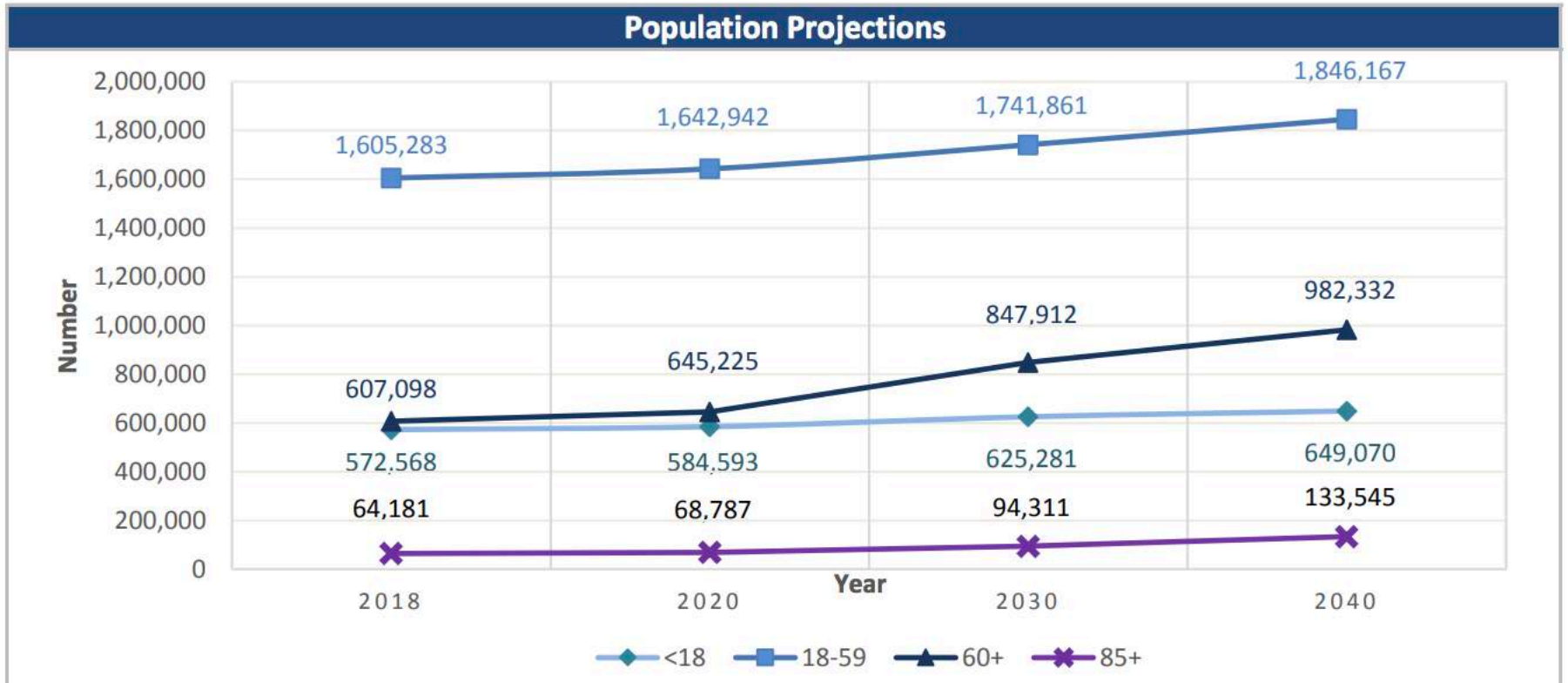
Miami-Dade Age-Friendly Initiative

What's Happening in Miami-Dade?

www.AgeFriendlyMiami.org

Miami-Dade is home to over
600,000 older adults

Populations Projections Miami-Dade (2017-2040)



Source: Office of Economic and Demographic Research, 2017

Older adults are a PRIZED
DEMOGRAPHIC with an active voting
record, significant buying power, and a
wealth of job experience.

**THEY ARE A PART OF WHAT MAKES
MIAMI-DADE DIVERSE AND
DYNAMIC.**

NEED FOR AN AGE-FRIENDLY FOCUS



- But, most communities were not built for this shift in demographics. Our economies, policies, and communities were not built to accommodate an aging population or aging in place.
- How well Miami-Dade responds to the aging phenomenon and meets the needs of older adults will depend on how well we prepare our communities to do so;
- And how we can work collectively toward sustainable change to ensure our community is a place where people of all ages can live with the quality of life that they need and deserve.

Miami-Dade

Age-Friendly Initiative

The Miami-Dade Age-Friendly Initiative is a collaborative effort to create a community where older adults of all ages can stay active, engaged, and healthy with dignity and enjoyment.

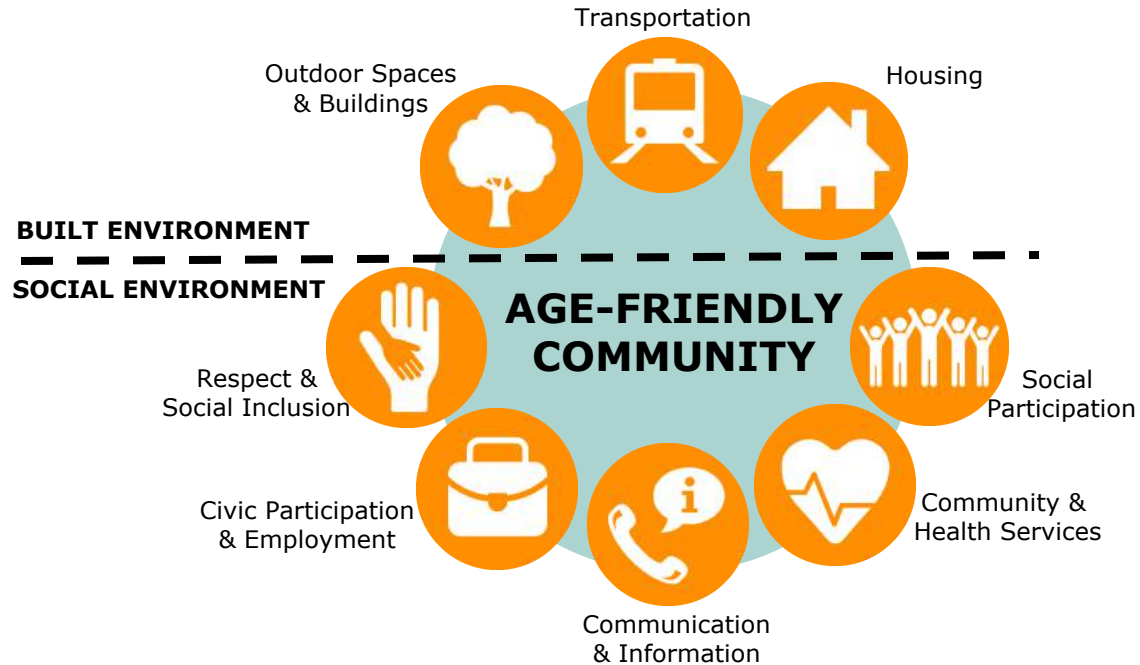
LEADERSHIP



- **Infrastructure**
 - Lead Agencies
 - Funders
 - Stakeholder Advisory Committee
 - Older Adult Advisory Committee
 - Coordinating Organizations
- **Framework**
 - Collective Impact
 - Policy Systems and Environmental Change



AGE-FRIENDLY DOMAINS OF LIVABILITY



Adapted from: Suzanne Garon, University of Sherbrooke

FOCUS AREAS



Leadership



Older Adults in All Policies



Age-Friendly Parks



Age-Friendly Streets & Neighborhoods



Awareness



Age-Friendly Network & Designation

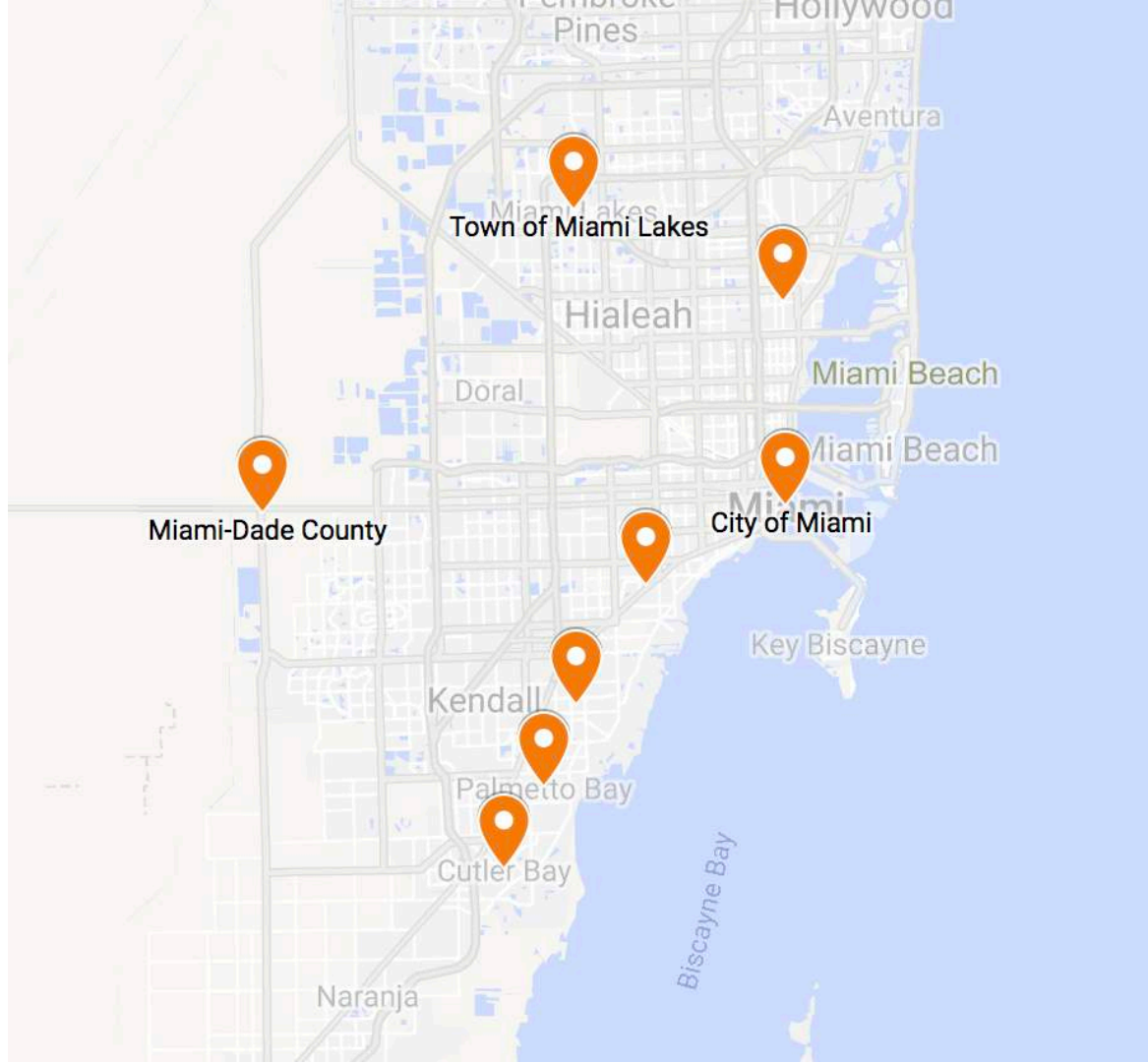
Age-Friendly Designation





AGE-FRIENDLY MUNICIPALITIES

1. Miami-Dade County
2. Coral Gables
3. Cutler Bay
4. Palmetto Bay
5. Pinecrest
6. Miami
7. Miami Lakes
8. Miami Shores



AGE-FRIENDLY SURVEY



AARP NATIONAL AGE-FRIENDLY SURVEY

- AARP National Research Office
- 525 Respondents
- Miami-Dade Residents, 50+
- $\pm 4.3\%$. Statistical error at the 95% confidence level
- Random Probability Sample
- Phone Surveys

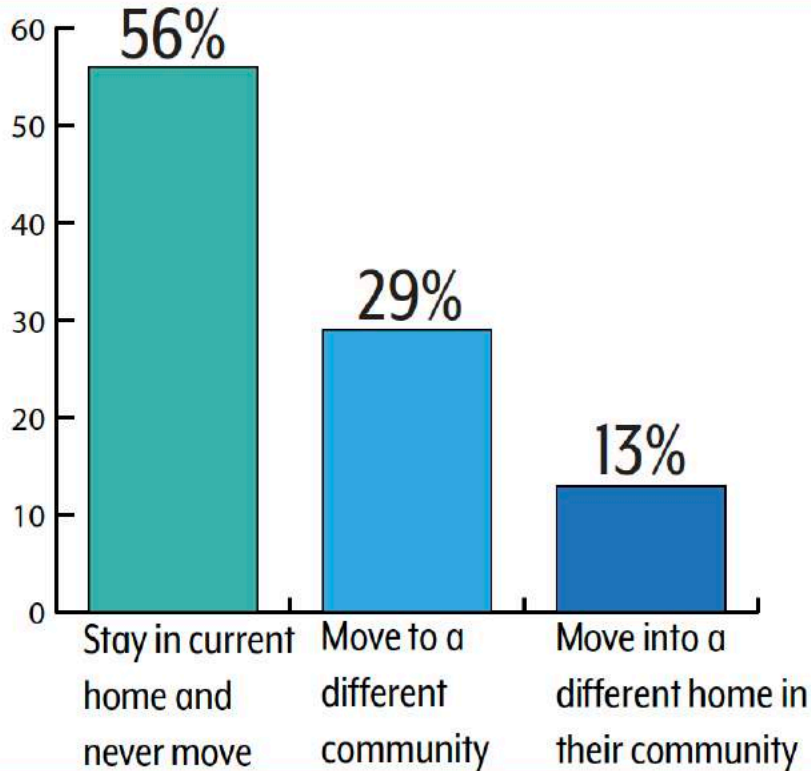


AARP[®]
Real Possibilities



AARP NATIONAL AGE-FRIENDLY SURVEY

Residents Are More Likely to:



Did You Know?

19
years

is the average amount of time community residents age 50-plus have lived in their homes

24
years

is the average amount of time community residents have resided in their communities

AARP NATIONAL AGE-FRIENDLY SURVEY

Top 2 Factors that Influence Residents Age 50-Plus to Relocate as They Age



60% of residents are concerned about their personal safety and security










56% of residents want to live in an area that has a lower cost of living

AGE-FRIENDLY INITIATIVE SURVEY

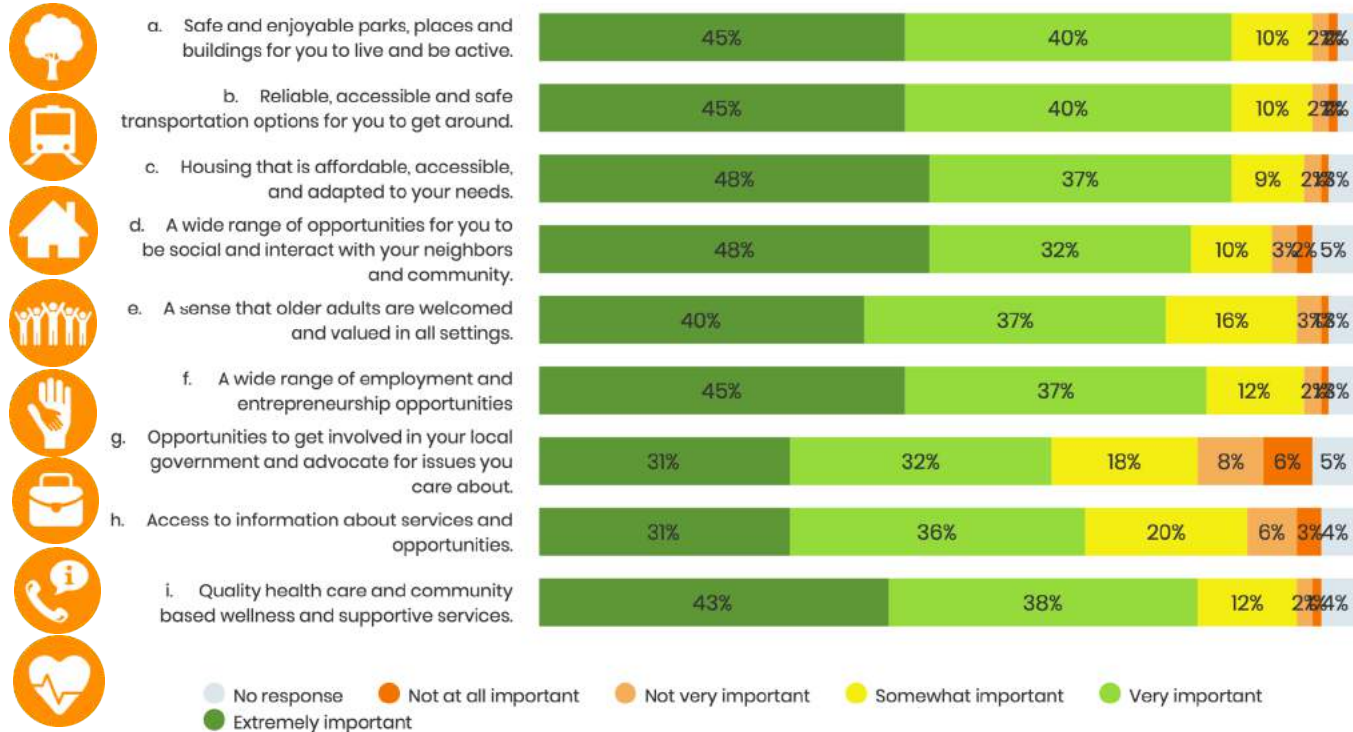
- 1,128 Sample Size
- Miami-Dade Residents, 50+
- Paper/In-Person & Online Surveys
- AFI Community Liaisons



Age-Friendly Domain

| | Domain | Questions |
|---|--|--|
|  | OUTDOOR SPACES & BUILDINGS | Safe and enjoyable parks, places and buildings for you to live and be active. |
|  | TRANSPORTATION | Reliable, accessible and safe transportation options for you to get around including walking, biking, transit, as well as driving. |
|  | HOUSING | Housing that is affordable, accessible, and adapted to your needs. |
|  | SOCIAL PARTICIPATION | A wide range of opportunities for you to be social and interact with your neighbors and community. |
|  | RESPECT & SOCIAL INCLUSION | A sense that older adults are welcomed and valued in all settings. |
|  | CIVIC PARTICIPATION & EMPLOYMENT | A wide range of employment and entrepreneurship opportunities. Opportunities to get involved in local government and advocate for issues you care about. |
|  | COMMUNICATION & INFORMATION | Access to information about services and opportunities. |
|  | COMMUNITY SUPPORT & HEALTH SERVICES | Quality health care and community based wellness and supportive services. |

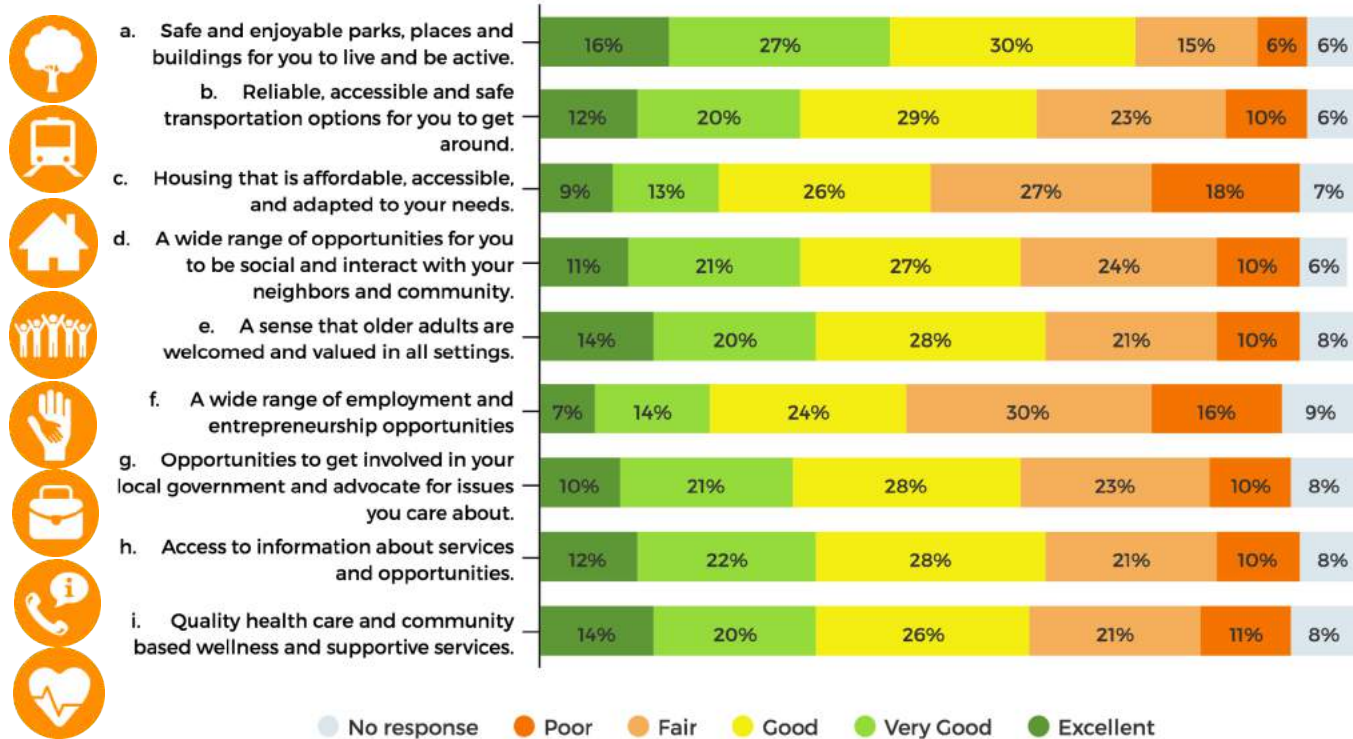
How important is it for you to have the following in your community?



n = 1128

Data: Miami-Dade Age-Friendly Initiative Community Survey 2017

How would you rate the following CURRENTLY in your community?



n= 1128

Data: Miami-Dade Age-Friendly Initiative Community Survey 2017

MOST URGENT AREAS FOR MIAMI-DADE



Transportation



Housing



Civic Participation & Employment

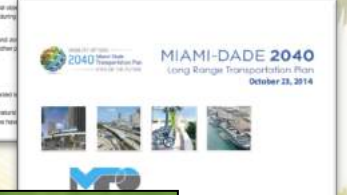


Community Support & Health System

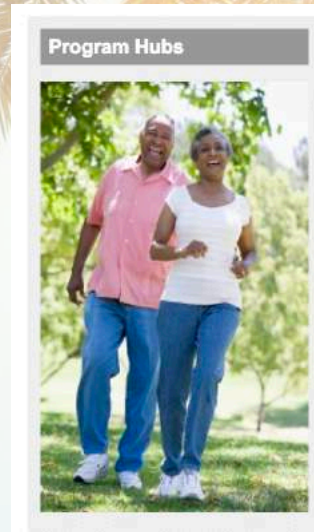
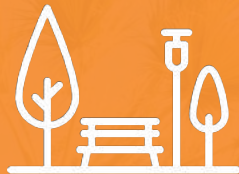
| | Domain | Description |
|--|-------------------------------------|--|
| | HOUSING | Housing that is affordable, accessible, and adapted to your needs. |
| | CIVIC PARTICIPATION & EMPLOYMENT | A wide range of employment and entrepreneurship opportunities. |
| | COMMUNITY SUPPORT & HEALTH SERVICES | Quality health care and community based wellness and supportive services (senior centers, etc). |
| | TRANSPORTATION | Reliable, accessible and safe transportation options for you to get around including walking, biking, transit, as well as driving. |
| | RESPECT & SOCIAL INCLUSION | A sense that older adults are welcomed and valued in all settings. |
| | COMMUNICATION & INFORMATION | Access to information about services and opportunities. |
| | SOCIAL PARTICIPATION | A wide range of opportunities for you to be social and interact with your neighbors and community. |
| | CIVIC PARTICIPATION & EMPLOYMENT | Opportunities to get involved in local government and advocate for issues you care about. |
| | OUTDOOR SPACES & BUILDINGS | Safe and enjoyable parks, places and buildings for you to live and be active. |

www.AgeFriendlyMiami.org/Survey

Older Adults in All Policies



Age-Friendly Parks



Age-Friendly Neighborhoods & Planning

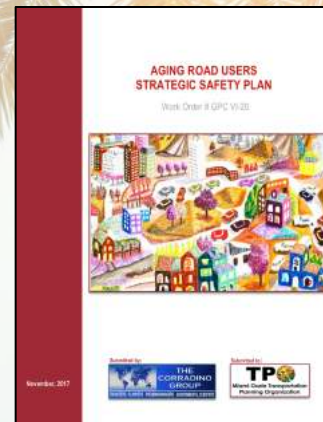
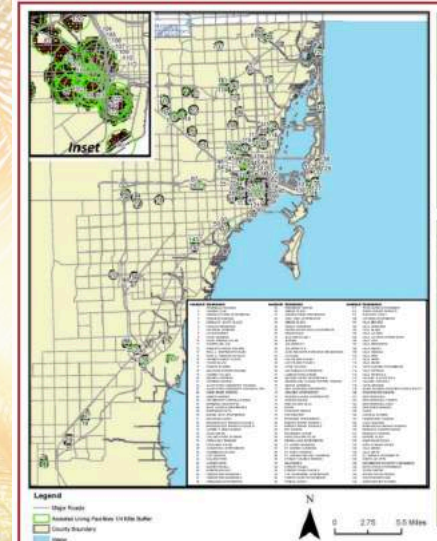
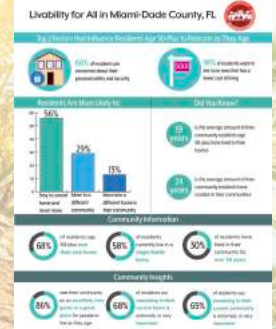
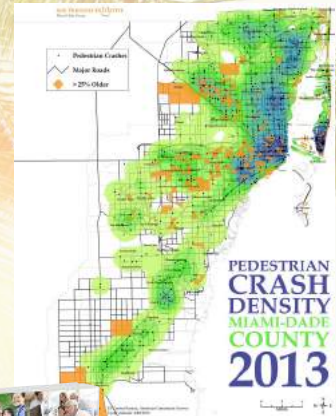


Figure S-1: Analysis of Crash Patterns



Awareness





Mini-Grants

Healthy West Kendall Age Friendly



We are honored to have been awarded a Mini-Grant by the Miami-Dade Age Friendly Initiative.

Favorite aspect: Bringing people together to plan a **community response** that will help support our West Kendall seniors upon hospital discharge.



West Kendall Baptist Hospital

BAPTIST HEALTH SOUTH FLORIDA

An academic affiliate of the **FIU** Herbert Wertheim College of Medicine

AGE-FRIENDLY SUMMIT

Healthy West Kendall

Powered by West Kendall Baptist Hospital





◦ DADE HERITAGE TRUST ◦

Preservation. Education. Advocacy.
Founded 1972

Dade Heritage Trust is leveraging the development of a community food garden and funding from the National Trust for Historic Preservation to provide programming to older adults and engage them in urban gardening, exercise, cooking skills, and social interaction.

The project is expected to impact over 400 older adults and will focus on bringing civic engagement in the West Grove.

A Collaboration between FIU's Physical Therapy, Interior and Landscape Architecture, Environmental and Urban Design, and Computer Science departments



Looking back, what was your favorite aspect or a particular moment in bringing your project to life?

It was very interesting to see the level of involvement and interest of the participants.

What is your favorite feedback received in regards to the project?

“I am happy to be asked about how I would like our park to look like”





North Bay Village

Looking back, what was your favorite aspect or a particular moment in bringing your project to life?

My favorite aspect is the support that the Village received from the business community. The original plan was to place the lab in the lobby area of the Village Hall (this area is also used as a post office, building, and for Village meetings). Elite Health opened a new medical center in the Village and immediately partnered with the Village to house the computer lab and provide ongoing staff support for residents. Secondly, the Village partnered with a local staffing agency. Through this agency the Village funded stipends for high school students to man the lab throughout the week.

What is your favorite feedback received in regards to the project?

Residents feel more confident using the computer and they are learning how to use their smart phones from the high school students. This is empowering.



Youth Co-Op created a computer training lab for older adults to use in searching for employment as well as to use for training for learning new technology, and upgrading and/or learning new skills in Microsoft Office.



As of January 2019, 61 job seekers 50 years old or over had received computer literacy through direct instructor-led classes. The computer lab will continue to be used for this purpose and will leverage AARP Foundation's Back to Work Program to pay for costs related to instructor salary and class materials in the future. This project offers older adults opportunities to increase their success in reaching financial stability.

Mini-Grants 2019

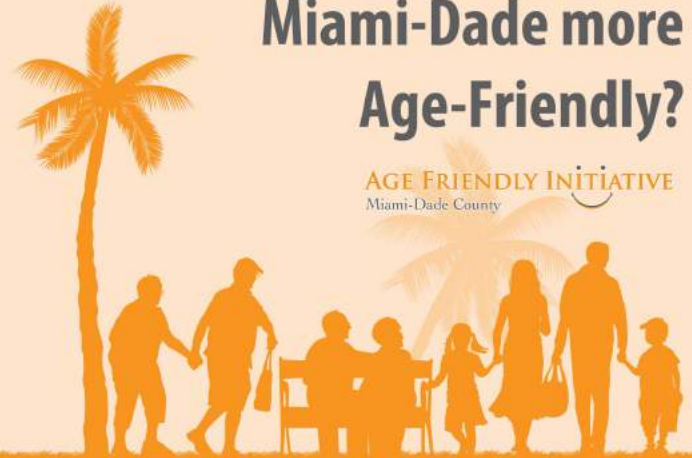
APPLY TODAY!

AgeFriendlyMiami.org/MiniGrants2019

Deadline: June 14th

Have an idea to help make Miami-Dade more Age-Friendly?

AGE FRIENDLY INITIATIVE
Miami-Dade County



APPLY FOR AN AGE-FRIENDLY MINI-GRANT!

The Miami-Dade Age-Friendly Initiative is a collaborative, collective impact effort to make Miami-Dade a place for older adults of all ages to stay active and healthy with dignity and enjoyment. We work with community residents, leaders, stakeholders, organizations, and municipalities toward a more age-friendly community.

We are proud to announce our second Age-Friendly Mini-Grant Program. The goal of the mini-grant program is to jump-start age-friendly projects across the County. We will award five \$2,500 mini-grants to selected eligible projects. Each project must target a specific community, group or neighborhood, within Miami-Dade, have an older adult focus, and address a specific age-friendly domain or domains.

Applications are open now until June 14th, 2019!

Learn more and apply at www.AgeFriendlyMiami.org/MiniGrants2019



FOLLOW US

AGE FRIENDLY INITIATIVE
Miami-Dade County



www.AgeFriendlyMiami.org



@AgeFriendlyMIA
#AgeFriendlyMiami